



NEXEN TIRE

**2021
PRODUCT
SHOWCASE**





THE ALL NEW, ALL SEASON
TIRE FOR CUVS & SUVs
ROADIAN GTX

**CROSSOVER TO
A BETTER RIDE**

MEETING THE MARKET

Crossovers and SUVs are more popular than ever, and their segment of the market is only increasing. Drivers count on their versatility and dependability, from cross-country road trips to trips to the store. The Nexen Roadian GTX touring tire meets this need and exceeds expectations. Drivers want a long tread life. They want all-season traction. They want the best mileage and a comfortable ride. On every count, the new Roadian GTX delivers.



NO SACRIFICE ON COMFORT

Drivers value a smooth ride, so computer simulations were used to create optimized block designs and sequences that reduce noise and increase comfort.



**45-DAY
TRIAL
OFFER**



70,000 MILE TREAD WEAR WARRANTY

Drivers place long tread life at the top of their tire wish list. And with the new Roadian GTX, that wish comes true. Its long wear life makes it a great fit for on-the-go drivers who want a tire they can depend on for years to come.



LIGHT SNOW? NO PROBLEM.

The Roadian GTX uses additional sipes, an optimized profile, and new compound technology to ensure upgraded traction in light snow conditions, which makes it a well-rounded all-season option.



34 SIZES
AVAILABLE

36 MONTHS
ROADSIDE
ASSISTANCE

17"-22" RIM SIZE
RANGE



OFF-ROAD. TOWING CAPACITY. DURABILITY. WE GOT YOU.

ROADIAN MTX
MUD TERRAIN TIRE

ON AND OFF THE TRAIL... WE GOT YOU.

THE ROADIAN MTX FEATURES AN AGGRESSIVE DESIGN THAT IS VERSATILE FOR ON- AND EXTREME OFF-ROAD DRIVING. THE TIRE'S CONSTRUCTION IS DESIGNED TO MAXIMIZE LOAD AND TOWING CAPABILITIES WITHOUT SACRIFICING ANY OF THE RUGGED TRAITS OR ON-HIGHWAY DRIVING COMFORT ONE WOULD EXPECT FROM OUR ROADIAN LINE OF TIRES.



3-PLY SIDEWALL PROTECTION ON ALL SIZES FOR INCREASED DURABILITY



DUAL SIDEWALL DESIGN FOR A CUSTOM LOOK
◀ BEAST | MACHINE ▶



F-LOAD RATED FOR HEAVIER LOADS
SUPPORTING 80 PSI IN BOTH LT-METRIC AND FLOTATION APPLICATIONS



45-DAY TRIAL OFFER

35 SIZES AVAILABLE

36 MONTHS ROADSIDE ASSISTANCE

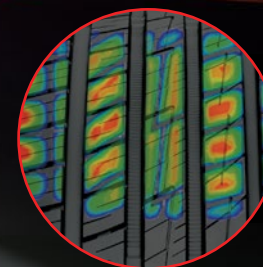
15"-22" RIM SIZE RANGE

ALL SEASON.
RAIN SLICK ROADS.
STICKY DRY HANDLING.
WE GOT YOU.

N'FERA AU7
ULTRA HIGH PERFORMANCE ALL SEASON

MASTER THE ELEMENTS

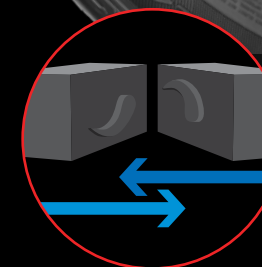
THE N'FERA AU7 IS MANUFACTURED WITH AN ENHANCED TREAD PATTERN SPECIFICALLY DESIGNED TO HEIGHTEN WET BRAKING PERFORMANCE AND HANDLING. THE CONSTRUCTION OF THE TIRE HAS MAXIMUM GRIP FOR MAXIMUM PEACE OF MIND.



OPTIMIZED BLOCK STIFFNESS FOR INCREASED HANDLING



3D NANO GRIP TECHNOLOGY STICKS TO THE ROAD FOR IMPROVED WET BRAKING



3D KERF SIPES REINFORCE BLOCK STIFFNESS FOR IMPROVED HANDLING



45-DAY TRIAL OFFER

45 SIZES AVAILABLE

50k MILEAGE WARRANTY

16"-20" RIM SIZE RANGE



ASSOCIATE DEALER PROGRAM

NEXEN NEXT LEVEL DEALER PROGRAM

Easy to understand

Fast payouts

Dealer Dashboards

Distributor Dashboards

What if? Calculator

Annual True-up

Combine Locations

And much more!

NEXENACE
ACCELERATED CERTIFICATION & EDUCATION

**EARN POINTS.
ENTER
SWEEPSTAKES.
ORDER
MERCHANDISE.
REQUEST POP
MATERIALS TOO.**

NEXENACE.COM



RESOURCES FOR

OUR DEALERS!



**NEW NEXEN
TIRE APP**
AVAILABLE NOW

**DRIVING SALES
FOR OUR NEXT
LEVEL DEALERS**

**DOWNLOAD THE
APP TODAY!**



**FIND EVERYTHING
YOU NEED**



Dealer Finder

Tire Finder

Tire Lineup

Brand Guide

Brand Asset Library

Dealer Locator

Dealer Resources

Decal Requests

NEXENTIREUSA.COM

N FERA SUR4g

EXTREME ULTRA HIGH PERFORMANCE

Built to perform under the most aggressive driving conditions, this extreme UHP tire is at the top of the class in braking and handling performance. Ideal use is for street sport applications.

OE FITMENT
DODGE



SIZES AVAILABLE: 21
SIZE RANGE: 15" – 20"
MILEAGE WARRANTY: N/A
ROAD HAZARD: N/A
ROADSIDE ASSISTANCE: 36 months
UTQG: 100/200 A A
SPEED RATING: W & Y

Page 14

N FERA SU1

ULTRA HIGH PERFORMANCE SUMMER

Perfect fit for sports car applications or for the driver who wants a little more performance out of their standard vehicle. Excels at braking and cornering performance.



SIZES AVAILABLE: 56
SIZE RANGE: 16" – 24"
MILEAGE WARRANTY: 25,000 miles
ROAD HAZARD: First 3/32" or 2 years
ROADSIDE ASSISTANCE: 36 months
FREE TRIAL: 45 days or 500 miles
UTQG: 300 AA A
SPEED RATING: W & Y

Page 15

N FERA AU7

ULTRA HIGH PERFORMANCE ALL SEASON

Designed for the discretionary driver of sports cars, luxury coupes and performance sedans looking for superior traction in dry and wet conditions.

OE FITMENT
VW



SIZES AVAILABLE: 45
SIZE RANGE: 16" – 20"
UTQG: 500 AA A/560 A A
SPEED RATING: H, W & Y

MILEAGE WARRANTY: 50,000 miles
ROAD HAZARD: First 3/32" or 2 years
ROADSIDE ASSISTANCE: 36 months
FREE TRIAL: 45 days or 500 miles

Page 17

N PriZ AH8

GRAND TOURING ALL SEASON

Designed for family sedans that depend on safety year-round. Ride confidently with excellent traction in dry, wet and light snow conditions.

OE FITMENT
VW HYUNDAI KIA RAM



SIZES AVAILABLE: 61
SIZE RANGE: 14" – 19"
UTQG: 440/500/560/600 A A
SPEED RATING: T, H, V & W

MILEAGE WARRANTY: 70,000 miles
ROAD HAZARD: First 3/32" or 2 years
ROADSIDE ASSISTANCE: 36 months
FREE TRIAL: 45 days or 500 miles

Page 19

Aria AH7

PREMIUM STANDARD TOURING ALL SEASON

A long-lasting, premium all-season tire, which offers one of the longest mileage warranties in its class.



SIZES AVAILABLE: 25
SIZE RANGE: 15" – 18"
MILEAGE WARRANTY: 80,000 miles
ROAD HAZARD: First 3/32" or 2 years
ROADSIDE ASSISTANCE: 36 months
FREE TRIAL: 45 days or 500 miles
UTQG: 760 A A
SPEED RATING: T & H

Page 21

N PriZ AH5

STANDARD TOURING ALL SEASON

The perfect tire for entry-level sedans and coupes. This tire offers a great balance of performance, handling, comfort and wear life at a value price.



SIZES AVAILABLE: 45
SIZE RANGE: 14" – 17"
MILEAGE WARRANTY: 50,000 miles
ROAD HAZARD: First 3/32" or 2 years
ROADSIDE ASSISTANCE: 36 months
UTQG: 460 A A
SPEED RATING: S, T, H, & V

Page 22

ROADIAN HP

STREET SPORT TRUCK ALL SEASON

A low-profile truck and SUV tire that delivers sporty performance on any road surface. Perfect for custom wheel packages and modified vehicles.



SIZES AVAILABLE: 22
SIZE RANGE: 17" – 24"
MILEAGE WARRANTY: 40,000 miles
ROAD HAZARD: First 3/32" or 2 years
ROADSIDE ASSISTANCE: 36 months
UTQG: 460 A A
SPEED RATING: H & V

Page 24

ROADIAN GTX

CUV/SUV TOURING

Drivers count on versatility and dependability, from cross-country road trips to trips to the store. The Nexen Roadian GTX touring tire meets this need and exceeds expectations. Drivers want a long tread life. They want all-season traction. They want the best mileage and a comfortable ride. On every count, the new Roadian GTX delivers.

OE FITMENT
HYUNDAI KIA MITSUBISHI MOTORS



SIZES AVAILABLE: 34
SIZE RANGE: 17" – 22"
MILEAGE WARRANTY: 70,000 miles
ROAD HAZARD: First 3/32" or 2 years
ROADSIDE ASSISTANCE: 36 months
FREE TRIAL: 45 days or 500 miles
UTQG: 600/680 A A
SPEED RATING: H, T, V & W

Page 25

ROADIAN HTX RH5

HIGHWAY TERRAIN

This highway-inspired truck tire offers exceptional wear and load-carrying features. Trusted Original Equipment on the Ram 1500 and 3500.

OE FITMENT
RAM



SIZES AVAILABLE: 48
SIZE RANGE: 15" – 22"
MILEAGE WARRANTY (P): 65,000 miles
MILEAGE WARRANTY (LT): 40,000 miles
ROAD HAZARD: First 3/32" or 2 years
ROADSIDE ASSISTANCE: 36 months
FREE TRIAL: 45 days or 500 miles
UTQG: 640 A A (P) Metric
SPEED RATING: Q, R, S, T, H & V

Page 27

ROADIAN AT PRO RA8

ALL TERRAIN

An aggressive tread pattern that conquers any terrain thrown its way. Designed to keep gravel out, optimize mud extraction and prevent impact damage. Trusted Original Equipment on the Ram 3500.

OE FITMENT
RAM



SIZES AVAILABLE: 57
SIZE RANGE: 15" – 22"
MILEAGE WARRANTY (P): 50,000 miles
MILEAGE WARRANTY (LT): 40,000 miles
ROAD HAZARD: First 3/32" or 2 years
ROADSIDE ASSISTANCE: 36 months
FREE TRIAL: 45 days or 500 miles
UTQG: 560 A B (P) Metric
SPEED RATING: R, S, T & H

Page 29

ROADIAN MTX

MUD TERRAIN

The Roadian MTX features an aggressive design that is extremely versatile for on- and off-road driving. Each tire boasts a dual sidewall design that allows you to customize the look of the tire on your vehicle. The Roadian MTX also features a standard 3-ply design and F-Load weight rating that makes it extremely capable for heavy hauling. With such rugged traits, you wouldn't expect the Roadian MTX to be as quiet as it is on the highway, but thanks to its patented tread block design, the road noise has been minimized.



SIZES AVAILABLE: 35
SIZE RANGE: 15" – 22"
MILEAGE WARRANTY: N/A
ROAD HAZARD: N/A
ROADSIDE ASSISTANCE: 36 months
FREE TRIAL: 45 days or 500 miles
SPEED RATING: Q

Page 31

ROADIAN CT8 HL

COMMERCIAL VAN/LT

A tire constructed to deliver heavy-duty performance for commercial vehicles. Replacement sizes for all Euro and U.S. commercial vans. Trusted Original Equipment on the Ram ProMaster.

OE FITMENT
RAM



SIZES AVAILABLE: 15
SIZE RANGE: 15" – 18"
MILEAGE WARRANTY: N/A
ROAD HAZARD: N/A
ROADSIDE ASSISTANCE: 36 months
FREE TRIAL: 45 days or 500 miles
SPEED RATING: R, S & T

Page 34

A TIRE FOR EVERY ROAD.

2021 NEXEN TIRE PRODUCT SHOWCASE

HIGH PERFORMANCE

N'FERA SUR4G	14
N'FERA SU1	15
N'FERA AU7	17

PASSENGER

N'PRIZ AH8	19
ARIA AH7	21
N'PRIZ AH5	22
SB-802	23

CUV/SUV/LIGHT TRUCK

ROADIAN HP	24
ROADIAN GTX.....	25
ROADIAN HTX RH5	27
ROADIAN AT PRO RA8	29
ROADIAN MTX	31
ROADIAN MT	33
ROADIAN CT8 HL	34
ROADIAN CT8	35

WINTER

WINGUARD SPORT 2	36
WINGUARD ICE PLUS	38
WINGUARD ICE SUV	40
WINGUARD WINSPIKE WH62	41
WINGUARD WINSPIKE WS62	43
WINGUARD WINSPIKE	44
EUROWIN	45

OEM

ORIGINAL EQUIPMENT 2021	46
-------------------------------	----

WARRANTY

NEXEN TOTAL COVERAGE WARRANTY	49
-------------------------------------	----

MINIMUM ADVERTISED PRICING POLICY	52
---	----

CALENDAR	54
----------------	----



N'FERA SUR4G

EXTREME ULTRA HIGH PERFORMANCE

The N'Fera SUR4G is built to perform under the most aggressive driving conditions. This extreme UHP tire is at the top of the class in braking and handling performance. Ideal use is for street sport applications.

TOTAL
COVERAGE
WARRANTY
NEXEN TIRE



TREAD WEAR
WARRANTY
N/A



ROAD HAZARD
WARRANTY
N/A



ROADSIDE
ASSISTANCE
36 MONTHS

PATTERN CODE: SUR4G

OE FITMENT ON

Product Code	P/ LT	Size	XL	LI	SS	PLY	Max Air (psi)	Max Load (lbs)		Rim		Section Width (inch)	Overall Diameter (inch)	Tread Depth (/32")	UTQG			Sidewall	MSRP	OE
								S	D	Measuring	Approved				Tread-wear	Trac.	Temp.			
15717		225/45R15		87	W	4	51	1,201	-	7.5	7.0-8.5	8.9	23.0	9.0	200	A	A	Black	\$130.98	
15718		205/55R16		91	W	4	51	1,356	-	6.5	5.5-7.5	8.4	24.9	7.5	200	A	A	Black	\$125.98	
15719		225/50R16		92	W	4	51	1,389	-	7.0	6.0-8.0	9.2	24.9	9.0	200	A	A	Black	\$132.98	
15720		215/45R17		87	Y	4	51	1,201	-	7.0	7.0-8.0	8.4	24.6	7.5	200	A	A	Black	\$135.98	
15721		225/45R17		91	Y	4	51	1,356	-	7.5	7.0-8.5	8.9	25.0	7.5	200	A	A	Black	\$137.98	
15722		235/45R17		94	Y	4	51	1,477	-	8.0	7.5-9.0	9.3	25.4	9.0	200	A	A	Black	\$150.98	
15723		245/40R17		91	Y	4	51	1,356	-	8.5	8.0-9.5	9.8	24.7	9.0	200	A	A	Black	\$156.98	
15724		255/40R17		94	Y	4	51	1,477	-	9.0	8.5-10.0	10.2	25.0	9.0	200	A	A	Black	\$154.98	
15725		225/40R18		88	Y	4	51	1,235	-	8.0	7.5-9.0	9.1	25.1	9.0	200	A	A	Black	\$171.98	
15726		225/45R18		91	Y	4	51	1,356	-	7.5	7.0-8.5	8.9	25.9	9.0	200	A	A	Black	\$185.98	
15727		235/40R18		91	Y	4	51	1,356	-	8.5	8.0-9.5	9.5	25.4	7.5	200	A	A	Black	\$182.98	
15728		245/40R18		93	Y	4	51	1,433	-	8.5	8.0-9.5	9.8	25.7	7.5	200	A	A	Black	\$190.98	
15729		255/35R18		90	Y	4	51	1,323	-	9.0	8.5-10.0	10.2	25.0	9.0	200	A	A	Black	\$223.98	
15736		265/35R18		93	Y	4	51	1,433	-	9.5	9.0-10.5	10.7	25.3	7.5	200	A	A	Black	\$235.98	
15621		275/40R18		99	Y	4	51	1,709	-	9.5	9.0-11.0	10.9	26.7	9.0	200	A	A	Black	\$163.98	
15730		275/35R18		95	Y	4	51	1,521	-	9.5	9.0-11.0	10.9	25.6	9.0	200	A	A	Black	\$253.98	
15731		225/40R19		89	Y	4	51	1,279	-	8.0	7.5-9.0	9.1	26.1	7.5	200	A	A	Black	\$246.98	
15732		235/35R19		87	Y	4	51	1,201	-	8.5	8.0-9.5	9.5	25.5	7.5	200	A	A	Black	\$242.98	
15733		245/40R19		94	Y	4	51	1,477	-	8.5	8.0-9.5	9.8	26.7	7.5	200	A	A	Black	\$225.98	
15734		275/35R19		96	Y	4	51	1,565	-	9.5	9.0-11.0	10.9	26.6	9.0	200	A	A	Black	\$292.98	
* 17387		275/40R20		102	Y	4	51	1,874	-	9.5	9.0-11.0	10.9	28.7	6.5	100	AA	A	Black	\$324.98	Dodge

Please be advised that extreme ultra high performance tires, although approved for street use, are targeted for track and competition driving. The tires should not be used on wet roads or in cold temperatures, due to the special tread compound and design. In order to assure safety and performance, please see "Tire Care & Maintenance" section in NEXEN TOTAL COVERAGE WARRANTY for important details on usage and storage.

Technical data can be changed without further notice.
For more detailed OE application information, please refer to "Original Equipment 2021" page.
* Symmetric Tread Design

PERFORMANCE RATINGS

BRAKING
10

COMFORT
5

FUEL EFFICIENCY
5

HANDLING
10

WEAR LIFE
4

OE Tire for >
DODGE



N'FERA SU1

ULTRA HIGH PERFORMANCE SUMMER

The N'Fera SU1 has three main grooves and a semi groove to maximize wet driving performance and enhance handling. The dry grip technology boosts handling and braking performance, while an optimum surface split siping design improves wet/dry traction performance. An equally balanced design and enhanced block rigidity disperse stress evenly during high-speed cornering, boosting cornering and steering stability.

TOTAL
COVERAGE
WARRANTY
NEXEN TIRE



TREAD WEAR
WARRANTY
25,000 MILES



ROAD HAZARD
WARRANTY
FIRST 3/32" OR 2 YEARS



ROADSIDE
ASSISTANCE
36 MONTHS



FREE TRIAL
45 DAYS OR
500 MILES

PATTERN CODE: SU1

Product Code	P/ LT	Size	XL	LI	SS	PLY	Max Air (psi)	Max Load (lbs)		Rim		Section Width (inch)	Overall Diameter (inch)	Tread Depth (/32")	UTQG			Sidewall	MSRP
								S	D	Measuring	Approved				Tread-wear	Trac.	Temp.		
13416		195/45R16	XL	84	W	4	50	1,102	-	6.5	6.0-7.5	7.7	22.9	9.5	300	AA	A	Black	\$98.98
12729		205/40R16		79	W	4	51	963	-	7.5	7.0-8.0	8.3	22.5	9.5	300	AA	A	Black	\$98.98
12346		205/40R17	XL	84	W	4	50	1,102	-	7.5	7.0-8.0	8.3	23.5	9.5	300	AA	A	Black	\$85.98
12349		215/40R17	XL	87	W	4	50	1,201	-	7.5	7.0-8.5	8.6	23.8	9.5	300	AA	A	Black	\$111.98
12351		215/45R17	XL	91	W	4	50	1,356	-	7.0	7.0-8.0	8.4	24.6	9.5	300	AA	A	Black	\$106.98
12300		225/45R17	XL	94	Y	4	50	1,477	-	7.5	7.0-8.5	8.9	25.0	9.5	300	AA	A	Black	\$116.98
12311		235/45R17	XL	97	W	4	50	1,609	-	8.0	7.5-9.0	9.3	25.4	9.5	300	AA	A	Black	\$124.98
12722		245/40R17	XL	95	W	4	50	1,521	-	8.5	8.0-9.5	9.8	24.7	9.5	300	AA	A	Black	\$124.98
12731		255/40R17		94	W	4	51	1,477	-	9.0	8.5-10.0	10.2	25.0	9.5	300	AA	A	Black	\$136.98
14112		275/40R17		98	W	4	51	1,653	-	9.5	9.0-11.0	10.9	25.7	9.5	300	AA	A	Black	\$148.98
12348		215/35R18	XL	84	Y	4	50	1,102	-	7.5	7.0-8.5	8.6	23.9	9.5	300	AA	A	Black	\$138.98
12350		215/40R18	XL	89	Y	4	50	1,279	-	7.5	7.0-8.5	8.6	24.8	9.5	300	AA	A	Black	\$138.98
14768		225/40R18	XL	92	Y	4	50	1,389	-	8.0	7.5-9.0	9.1	25.1	9.5	300	AA	A	Black	\$132.98
12332		225/45R18	XL	95	Y	4	50	1,521	-	7.5	7.0-8.5	8.9	25.9	9.5	300	AA	A	Black	\$139.98
12302		235/40R18	XL	95	Y	4	50	1,521	-	8.5	8.0-9.5	9.5	25.4	9.5	300	AA	A	Black	\$158.98
12345		245/35R18	XL	92	Y	4	50	1,389	-	8.5	8.0-9.5	9.8	24.8	9.5	300	AA	A	Black	\$157.98
12312		245/40R18	XL	97	Y	4	50	1,609	-	8.5	8.0-9.5	9.8	25.7	9.5	300	AA	A	Black	\$152.98
12726		245/45R18	XL	100	Y	4	50	1,764	-	8.0	7.5-9.0	9.6	26.7	9.5	300	AA	A	Black	\$152.98

CONTINUED ON NEXT PAGE ...

PERFORMANCE RATINGS

BRAKING
10

COMFORT
9

FUEL EFFICIENCY
7

HANDLING
10

WEAR LIFE
7



N FERA SU1

... CONTINUED FROM PREVIOUS PAGE

PATTERN CODE: SU1

Product Code	P/LT	Size	XL	LI	SS	PLY	Max Air (psi)	Max Load (lbs)		Rim		Section Width (inch)	Overall Diameter (inch)	Tread Depth (/32")	UTQG			Sidewall	MSRP
								S	D	Measuring	Approved				Tread-wear	Trac.	Temp.		
12347		255/35R18	XL	94	Y	4	50	1,477	-	9.0	8.5-10.0	10.2	25.0	9.5	300	AA	A	Black	\$172.98
12592		255/40R18	XL	99	Y	4	50	1,709	-	9.0	8.5-10.0	10.2	26.0	9.5	300	AA	A	Black	\$177.98
12734		255/45R18	XL	103	Y	4	50	1,929	-	8.5	8.0-9.5	10.0	27.0	9.5	300	AA	A	Black	\$181.98
13516		265/35R18	XL	97	Y	4	50	1,609	-	9.5	9.0-10.5	10.7	25.3	9.5	300	AA	A	Black	\$194.98
13517		275/35R18	XL	99	W	4	50	1,709	-	9.5	9.0-11.0	10.9	25.6	9.5	300	AA	A	Black	\$203.98
12331		225/35R19	XL	88	Y	4	50	1,235	-	8.0	7.5-9.0	9.1	25.2	9.5	300	AA	A	Black	\$158.98
14121		225/40R19	XL	93	Y	4	50	1,433	-	8.0	7.5-9.0	9.1	26.1	9.5	300	AA	A	Black	\$179.98
14099		225/45R19	XL	96	W	4	50	1,565	-	7.5	7.0-8.5	8.9	27.0	9.5	300	AA	A	Black	\$175.98
12315		235/35R19	XL	91	Y	4	50	1,356	-	8.5	8.0-9.5	9.5	25.5	9.5	300	AA	A	Black	\$166.98
13514		245/35R19	XL	93	Y	4	50	1,433	-	8.5	8.0-9.5	9.8	25.8	9.5	300	AA	A	Black	\$173.98
12723		245/40R19	XL	98	Y	4	50	1,653	-	8.5	8.0-9.5	9.8	26.7	9.5	300	AA	A	Black	\$191.98
12584		245/45R19	XL	102	Y	4	50	1,874	-	8.0	7.5-9.0	9.6	27.7	9.5	300	AA	A	Black	\$188.98
14108		255/30R19	XL	91	Y	4	50	1,356	-	9.0	8.5-9.5	10.2	25.1	9.5	300	AA	A	Black	\$189.98
12338		255/35R19	XL	96	W	4	50	1,565	-	9.0	8.5-10.0	10.2	26.0	9.5	300	AA	A	Black	\$186.98
13519		255/40R19	XL	100	Y	4	50	1,764	-	9.0	8.5-10.0	10.2	27.0	9.5	300	AA	A	Black	\$196.98
13524		255/45R19	XL	104	Y	4	50	1,984	-	8.5	8.0-9.5	10.0	28.1	9.5	300	AA	A	Black	\$203.98
13512		265/30R19	XL	93	Y	4	50	1,433	-	9.5	9.0-10.0	10.7	25.3	9.5	300	AA	A	Black	\$201.98
12717		275/30R19	XL	96	Y	4	50	1,565	-	9.5	9.0-10.0	10.9	25.6	9.5	300	AA	A	Black	\$218.98
13518		275/35R19	XL	100	Y	4	50	1,764	-	9.5	9.0-11.0	10.9	26.6	9.5	300	AA	A	Black	\$247.98
13520		275/40R19	XL	105	Y	4	50	2,039	-	9.5	9.0-11.0	10.9	27.7	9.5	300	AA	A	Black	\$256.98
14639		225/30R20	XL	85	Y	4	50	1,135	-	8.0	8.0	9.1	25.4	9.0	300	AA	A	Black	\$129.98
14101		225/35R20	XL	90	Y	4	50	1,323	-	8.0	7.5-9.0	9.1	26.2	9.5	300	AA	A	Black	\$131.98
14758		235/30R20	XL	88	Y	4	50	1,235	-	8.5	8.5	9.5	25.6	10.0	300	AA	A	Black	\$189.98
13511		245/30R20	XL	90	Y	4	50	1,323	-	8.5	8.0-8.5	9.8	25.8	9.5	300	AA	A	Black	\$181.98
13515		245/35R20	XL	95	Y	4	50	1,521	-	8.5	8.0-9.5	9.8	26.8	9.5	300	AA	A	Black	\$149.98
14106		245/40R20	XL	99	Y	4	50	1,709	-	8.5	8.0-9.5	9.8	27.7	9.5	300	AA	A	Black	\$181.98
15090		245/45R20	XL	103	Y	4	50	1,929	-	8.0	7.5-9.0	9.6	28.7	9.0	300	AA	A	Black	\$196.98
14110		255/35R20	XL	97	Y	4	50	1,609	-	9.0	8.5-10.0	10.2	27.0	9.5	300	AA	A	Black	\$151.98
12716		275/30R20	XL	97	Y	4	50	1,609	-	9.5	9.0-10.0	10.9	26.5	9.5	300	AA	A	Black	\$213.98
14113		275/35R20	XL	102	Y	4	50	1,874	-	9.5	9.0-11.0	10.9	27.6	9.5	300	AA	A	Black	\$213.98
13513		285/30R20	XL	99	Y	4	50	1,709	-	10.0	9.5-10.5	11.4	26.8	9.5	300	AA	A	Black	\$236.98
14757		235/30R22	XL	90	Y	4	50	1,323	-	8.5	8.5	9.5	27.6	10.0	300	AA	A	Black	\$172.98
14647		245/30R22	XL	92	Y	4	50	1,389	-	8.5	8.0-8.5	9.8	27.8	9.0	300	AA	A	Black	\$159.98
14648		265/30R22	XL	97	Y	4	50	1,609	-	9.5	9.0-10.0	10.7	28.3	9.0	300	AA	A	Black	\$212.98
14646		295/25R22	XL	97	Y	4	50	1,609	-	10.5	10.0-11.0	11.9	27.8	9.0	300	AA	A	Black	\$280.98
14756		255/30R24	XL	97	Y	4	50	1,609	-	9.0	8.5-9.5	10.2	30.1	10.0	300	AA	A	Black	\$185.98
14754		275/25R24	XL	96	Y	4	50	1,565	-	10.0	10.0-10.5	11.1	29.4	10.0	300	AA	A	Black	\$230.98
14755		275/30R24	XL	101	Y	4	50	1,819	-	9.5	9.0-10.0	10.9	30.6	10.0	300	AA	A	Black	\$248.98

Technical data can be changed without further notice.

N FERA AU7

ULTRA HIGH PERFORMANCE ALL SEASON



The N'Fera AU7 is designed for the discretionary driver of sports cars, luxury coupes, and performance sedans looking for superior traction in dry and wet conditions. The N'Fera AU7 stands out against the competition, especially in wet conditions.

TOTAL
COVERAGE
WARRANTY
NEXEN TIRE

TREAD WEAR
WARRANTY
50,000 MILES

ROAD HAZARD
WARRANTY
FIRST 3/32"
OR 2 YEARS

ROADSIDE
ASSISTANCE
36 MONTHS

FREE TRIAL
45 DAYS OR
500 MILES

PATTERN CODE: AU7

OE FITMENT ON

Product Code	P/ LT	Size	XL	LI	SS	PLY	Max Air (psi)	Max Load (lbs)		Rim		Section Width (inch)	Overall Diameter (inch)	Tread Depth (/32")	UTQG			Sidewall	MSRP	OE	
								S	D	Measuring	Approved				Tread-wear	Trac.	Temp.				
14208		205/55R16			91	W	4	51	1,356	-	6.5	5.5-7.5	8.4	24.9	9.0	500	AA	A	Black	\$104.98	VW
15625		205/45R17			84	W	4	51	1,102	-	7.0	6.5-7.5	8.1	24.3	9.0	500	AA	A	Black	\$113.98	
14404		205/50R17	XL	93	W	4	50	1,433	-	6.5	5.5-7.5	8.4	25.1	9.0	500	AA	A	Black	\$117.98		
14403		215/45R17	XL	91	W	4	50	1,356	-	7.0	7.0-8.0	8.4	24.6	9.0	500	AA	A	Black	\$107.98		
15227		215/50R17	XL	95	W	4	50	1,521	-	7.0	6.0-7.5	8.9	25.5	9.0	500	AA	A	Black	\$118.98		
14401		215/55R17			94	W	4	51	1,477	-	7.0	6.0-7.5	8.9	26.3	9.0	500	AA	A	Black	\$117.98	
16313		215/55R17			94	H	4	51	1,477	-	7.0	6.0-7.5	8.9	26.3	9.0	560	A	A	Black	\$115.98	
15113		225/45R17	XL	94	W	4	50	1,477	-	7.5	7.0-8.5	8.9	25.0	9.0	500	AA	A	Black	\$115.98		
14400		225/50R17	XL	98	W	4	50	1,653	-	7.0	6.0-8.0	9.2	25.9	9.0	500	AA	A	Black	\$122.98		
14402		225/55R17			97	W	4	51	1,609	-	7.0	6.0-8.0	9.2	26.8	9.0	500	AA	A	Black	\$126.98	
15228		235/45R17	XL	97	W	4	50	1,609	-	8.0	7.5-9.0	9.3	25.4	9.0	500	AA	A	Black	\$119.98		
15626		235/55R17			99	W	4	51	1,709	-	7.5	6.5-8.5	9.6	27.2	9.0	500	AA	A	Black	\$119.98	
14419		245/40R17			91	W	4	51	1,356	-	8.5	8.0-9.5	9.8	24.7	9.0	500	AA	A	Black	\$136.98	
15229		245/45R17	XL	99	W	4	50	1,709	-	8.0	7.5-9.0	9.6	25.7	9.0	500	AA	A	Black	\$135.98		
15627		215/40R18			85	W	4	51	1,135	-	7.5	7.0-8.5	8.6	24.8	9.0	500	AA	A	Black	\$136.98	
14416		215/45R18			89	W	4	51	1,279	-	7.0	7.0-8.0	8.4	25.6	9.0	500	AA	A	Black	\$134.98	
14422		225/40R18	XL	92	W	4	50	1,389	-	8.0	7.5-9.0	9.1	25.1	9.0	500	AA	A	Black	\$129.98		
14412		225/45R18	XL	95	Y	4	50	1,521	-	7.5	7.0-8.5	8.9	25.9	9.0	500	AA	A	Black	\$145.98		
14406		225/50R18	XL	99	W	4	50	1,709	-	7.0	6.0-8.0	9.2	26.9	9.0	500	AA	A	Black	\$134.98		
15231		235/40R18	XL	95	W	4	50	1,521	-	8.5	8.0-9.5	9.5	25.4	9.0	500	AA	A	Black	\$139.98		

CONTINUED ON NEXT PAGE ...

PERFORMANCE RATINGS

BRAKING
10

COMFORT
9

FUEL EFFICIENCY
8

HANDLING
9

WEAR LIFE
8





... CONTINUED FROM PREVIOUS PAGE

PATTERN CODE: AU7

Product Code	P/ LT	Size	XL	LI	SS	PLY	Max Air (psi)	Max Load (lbs)		Rim		Section Width (inch)	Overall Diameter (inch)	Tread Depth (/32")	UTQG			Sidewall	MSRP	OE
								S	D	Measuring	Approved				Tread-wear	Trac.	Temp.			
15230		235/45R18	XL	98	W	4	50	1,653	-	8.0	7.5-9.0	9.3	26.3	9.0	500	AA	A	Black	\$147.98	
15114		235/50R18		97	W	4	51	1,609	-	7.5	6.5-8.5	9.6	27.3	9.0	500	AA	A	Black	\$148.98	
14411		245/40R18	XL	97	W	4	50	1,609	-	8.5	8.0-9.5	9.8	25.7	9.0	500	AA	A	Black	\$150.98	
14410		245/45R18	XL	100	W	4	50	1,764	-	8.0	7.5-9.0	9.6	26.7	9.0	500	AA	A	Black	\$151.98	
15628		245/50R18		100	W	4	51	1,764	-	7.5	7.0-8.5	10.0	27.7	9.0	500	AA	A	Black	\$152.98	
15232		255/35R18	XL	94	W	4	50	1,477	-	9.0	8.5-10.0	10.2	25.0	9.0	500	AA	A	Black	\$181.98	
14421		255/40R18		95	Y	4	51	1,521	-	9.0	8.5-10.0	10.2	26.0	9.0	500	AA	A	Black	\$181.98	
14414		255/45R18		99	W	4	51	1,709	-	8.5	8.0-9.5	10.0	27.0	9.0	500	AA	A	Black	\$163.98	
15636		275/35R18		95	Y	4	51	1,521	-	9.5	9.0-11.0	10.9	25.6	9.0	500	AA	A	Black	\$194.98	
14418		225/45R19	XL	96	W	4	50	1,565	-	7.5	7.0-8.5	8.9	27.0	9.0	500	AA	A	Black	\$170.98	
15234		235/40R19	XL	96	W	4	50	1,565	-	8.5	8.0-9.5	9.5	26.4	9.0	500	AA	A	Black	\$185.98	
15629		235/45R19		95	W	4	51	1,521	-	8.0	7.5-9.0	9.3	27.4	9.0	500	AA	A	Black	\$179.98	
14420		245/40R19	XL	98	Y	4	50	1,653	-	8.5	8.0-9.5	9.8	26.7	9.0	500	AA	A	Black	\$195.98	
14415		245/45R19	XL	102	W	4	50	1,874	-	8.0	7.5-9.0	9.6	27.7	9.0	500	AA	A	Black	\$184.98	
15630		255/35R19	XL	96	Y	4	50	1,565	-	9.0	8.5-10.0	10.2	26.0	9.0	500	AA	A	Black	\$183.98	
14423		255/40R19	XL	100	Y	4	50	1,764	-	9.0	8.5-10.0	10.2	27.0	9.0	500	AA	A	Black	\$196.98	
15233		255/45R19		100	W	4	51	1,764	-	8.5	8.0-9.5	10.0	28.1	9.0	500	AA	A	Black	\$199.98	
15631		275/35R19		96	Y	4	51	1,565	-	9.5	9.0-11.0	10.9	26.6	9.0	500	AA	A	Black	\$236.98	
15633		275/40R19		101	Y	4	51	1,819	-	9.5	9.0-11.0	10.9	27.7	9.0	500	AA	A	Black	\$231.98	
15637		225/35R20	XL	90	W	4	50	1,323	-	8.0	7.5-9.0	9.1	26.2	9.0	500	AA	A	Black	\$172.98	
15638		245/35R20	XL	95	Y	4	50	1,521	-	8.5	8.0-9.5	9.8	26.8	9.0	500	AA	A	Black	\$179.98	
15624		245/40R20	XL	99	Y	4	50	1,709	-	8.5	8.0-9.5	9.8	27.7	9.0	500	AA	A	Black	\$189.98	
14413		245/45R20	XL	103	W	4	50	1,929	-	8.0	7.5-9.0	9.6	28.7	9.0	500	AA	A	Black	\$186.98	
15634		255/35R20	XL	97	Y	4	50	1,609	-	9.0	8.5-10.0	10.2	27.0	9.0	500	AA	A	Black	\$154.98	
15635		275/35R20	XL	102	Y	4	50	1,874	-	9.5	9.0-11.0	10.9	27.6	9.0	500	AA	A	Black	\$215.98	

Technical data can be changed without further notice.
For more detailed OE application information, please refer to "Original Equipment 2021" page.



GRAND TOURING ALL SEASON

The N'Priz AH8 is designed for family sedans that require all-year traction in dry, wet and light snow conditions. Performance in light snow conditions is superior to its predecessor, the CP672.

TOTAL
COVERAGE
WARRANTY
NEXEN TIRE

TREAD WEAR
WARRANTY
70,000 MILES

ROAD HAZARD
WARRANTY
FIRST 3/32"
OR 2 YEARS

ROADSIDE
ASSISTANCE
36 MONTHS

FREE TRIAL
45 DAYS OR
500 MILES

PATTERN CODE: AH8

OE FITMENT ON



Product Code	P/ LT	Size	XL	LI	SS	PLY	Max Air (psi)	Max Load (lbs)		Rim		Section Width (inch)	Overall Diameter (inch)	Tread Depth (/32")	UTQG			Sidewall	MSRP	OE
								S	D	Meas.	Approved				Tread-wear	Trac.	Temp.			
14699		185/65R14		86	H	4	44	1,168	-	5.5	5.0-6.5	7.4	23.5	9.0	600	A	A	Black	\$68.98	
17612	P	185/60R15		84	H	4	44	1,102	-	5.5	5.0-6.5	7.4	23.7	9.0	440	A	A	Black	\$77.98	
15120		195/60R15		88	H	4	44	1,235	-	6.0	5.5-7.0	7.9	24.2	9.0	600	A	A	Black	\$80.98	
14979		185/65R15		88	H	4	44	1,235	-	5.5	5.0-6.5	7.4	24.4	9.0	500	A	A	Black	\$75.98	
15711		195/65R15		91	H	4	44	1,356	-	6.0	5.5-7.0	7.9	25.0	9.0	600	A	A	Black	\$78.98	
14386		195/65R15		91	T	4	44	1,356	-	6.0	5.5-7.0	7.9	25.0	9.0	500	A	A	Black	\$85.98	HYUNDAI
13466		195/65R15		91	T	4	44	1,356	-	6.0	5.5-7.0	7.9	25.0	9.0	500	A	A	Black	\$85.98	KIA
15117		205/65R15		94	H	4	44	1,477	-	6.0	5.5-7.5	8.2	25.5	9.0	600	A	A	Black	\$92.98	
15521		185/55R16		83	H	4	51	1,074	-	6.0	5.0-6.5	7.6	24.0	9.0	600	A	A	Black	\$83.98	
16407		185/60R16		86	H	4	51	1,168	-	5.5	5.0-6.5	7.4	24.7	9.0	600	A	A	Black	\$105.98	
15517		195/50R16		84	V	4	51	1,102	-	6.0	5.5-7.0	7.9	23.7	9.0	600	A	A	Black	\$92.98	
15523		195/55R16		87	V	4	51	1,201	-	6.0	5.5-7.0	7.9	24.4	9.0	600	A	A	Black	\$95.98	
15518		205/50R16		87	V	4	51	1,201	-	6.5	5.5-7.5	8.4	24.1	9.0	600	A	A	Black	\$99.98	
14194		205/55R16		91	H	4	44	1,356	-	6.5	5.5-7.5	8.4	24.9	10.0	560	A	A	Black	\$101.98	HYUNDAI
15710		205/55R16		91	V	4	44	1,356	-	6.5	5.5-7.5	8.4	24.9	10.0	600	A	A	Black	\$96.98	
15605		205/60R16		92	H	4	44	1,389	-	6.0	5.5-7.5	8.2	25.7	9.0	500	A	A	Black	\$101.98	HYUNDAI, KIA
13904		205/65R16		95	H	4	44	1,521	-	6.0	5.5-7.5	8.2	26.5	10.0	440	A	A	Black	\$104.98	KIA
15677	P	205/70R16		96	H	4	44	1,565	-	6.0	5.0-7.0	8.2	27.3	9.0	600	A	A	Black	\$108.98	
14369		215/55R16	XL	97	H	4	50	1,609	-	7.0	6.0-7.5	8.9	25.3	10.0	440	A	A	Black	\$104.98	RAM
14691		215/60R16		95	V	4	44	1,521	-	6.5	6.0-7.5	8.7	26.1	9.0	600	A	A	Black	\$95.98	

CONTINUED ON NEXT PAGE ...

PERFORMANCE RATINGS

Braking
9

Comfort
9

Fuel Efficiency
8

Handling
9

Wear Life
9



... CONTINUED FROM PREVIOUS PAGE

PATTERN CODE: AH8

Product Code	P/ LT	Size	XL	LI	SS	PLY	Max Air (psi)	Max Load (lbs)		Rim		Section Width (inch)	Overall Diameter (inch)	Tread Depth (/32")	UTQG			Sidewall	MSRP	OE
								S	D	Meas.	Approved				Tread-wear	Trac.	Temp.			
14693		215/65R16		98	V	4	44	1,653	-	6.5	6.0-7.5	8.7	27.0	9.0	600	A	A	Black	\$99.98	
15352		225/50R16		92	H	4	51	1,389	-	7.0	6.0-8.0	9.2	24.9	9.0	600	A	A	Black	\$106.98	
14705		225/55R16		95	V	4	51	1,521	-	7.0	6.0-8.0	9.2	25.7	9.0	600	A	A	Black	\$104.98	
14702		225/60R16		98	V	4	44	1,653	-	6.5	6.0-8.0	9.0	26.6	9.0	600	A	A	Black	\$103.98	
15118		225/65R16		100	H	4	44	1,764	-	6.5	6.0-8.0	9.0	27.5	9.0	600	A	A	Black	\$107.98	
15123		235/60R16		100	H	4	44	1,764	-	7.0	6.5-8.5	9.4	27.1	9.0	600	A	A	Black	\$113.98	
15119		235/65R16		103	H	4	44	1,929	-	7.0	6.5-8.5	9.4	28.0	9.0	600	A	A	Black	\$115.98	
15347		205/45R17		84	H	4	51	1,102	-	7.0	6.5-7.5	8.1	24.3	9.0	600	A	A	Black	\$108.98	
14749		215/45R17		87	H	4	44	1,201	-	7.0	7.0-8.0	8.4	24.6	9.0	500	A	A	Black	\$112.98	HYUNDAI
15712		205/50R17	XL	93	V	4	50	1,433	-	6.5	5.5-7.5	8.4	25.1	9.0	600	A	A	Black	\$106.98	
15530		205/55R17		91	H	4	51	1,356	-	6.5	5.5-7.5	8.4	25.9	9.0	500	A	A	Black	\$122.98	VW
16094		205/55R17		91	H	4	51	1,356	-	6.5	5.5-7.5	8.4	25.9	9.0	500	A	A	Black	\$121.98	HYUNDAI
14697		215/50R17		91	V	4	51	1,356	-	7.0	6.0-7.5	8.9	25.5	9.0	600	A	A	Black	\$107.98	
15606		215/55R17		94	V	4	44	1,477	-	7.0	6.0-7.5	8.9	26.3	9.0	500	A	A	Black	\$112.98	HYUNDAI, KIA
16383		215/55R17		94	V	4	44	1,477	-	7.0	6.0-7.5	8.9	26.3	9.0	500	A	A	Black	\$112.98	HYUNDAI, KIA
14698		215/60R17		96	V	4	44	1,565	-	6.5	6.0-7.5	8.7	27.2	9.0	600	A	A	Black	\$113.98	
14198		225/45R17		91	W	4	44	1,356	-	7.5	7.0-8.5	8.9	25.0	9.0	500	A	A	Black	\$112.98	HYUNDAI
14701		225/50R17		94	V	4	51	1,477	-	7.0	6.0-8.0	9.2	25.9	9.0	600	A	A	Black	\$113.98	
14694		225/55R17		97	V	4	51	1,609	-	7.0	6.0-8.0	9.2	26.8	9.0	600	A	A	Black	\$117.98	
15121		225/60R17		99	H	4	44	1,709	-	6.5	6.0-8.0	9.0	27.6	9.0	600	A	A	Black	\$123.98	
14753		235/45R17		94	V	4	51	1,477	-	8.0	7.5-9.0	9.3	25.4	9.0	600	A	A	Black	\$120.98	
15353		235/50R17		96	H	4	51	1,565	-	7.5	6.5-8.5	9.6	26.3	9.0	600	A	A	Black	\$125.98	
14704		235/55R17		99	V	4	51	1,709	-	7.5	6.5-8.5	9.6	27.2	9.0	600	A	A	Black	\$123.98	
14712		245/45R17		95	V	4	51	1,521	-	8.0	7.5-9.0	9.6	25.7	9.0	600	A	A	Black	\$126.98	
15520	P	245/50R17		98	V	4	51	1,653	-	7.5	7.0-8.5	10.0	26.7	9.0	600	A	A	Black	\$130.98	
17613		215/45R18		89	V	4	44	1,279	-	7.0	7.0-8.0	8.4	25.6	9.0	440	A	A	Black	\$122.98	
15359		215/55R18		95	H	4	51	1,521	-	7.0	6.0-7.5	8.9	27.3	9.0	600	A	A	Black	\$125.98	
14708		225/40R18		88	W	4	51	1,235	-	8.0	7.5-9.0	9.1	25.1	9.0	500	A	A	Black	\$122.98	HYUNDAI
15348		225/45R18		91	H	4	51	1,356	-	7.5	7.0-8.5	8.9	25.9	9.0	600	A	A	Black	\$121.98	
14706		225/50R18		95	V	4	51	1,521	-	7.0	6.0-8.0	9.2	26.9	9.0	600	A	A	Black	\$132.98	
14710		225/55R18		98	V	4	51	1,653	-	7.0	6.0-8.0	9.2	27.8	9.0	600	A	A	Black	\$148.98	
15122		225/60R18		100	H	4	44	1,764	-	6.5	6.0-8.0	9.0	28.6	9.0	600	A	A	Black	\$138.98	
15346		235/40R18		91	H	4	51	1,356	-	8.5	8.0-9.5	9.5	25.4	9.0	600	A	A	Black	\$133.98	
15349		235/45R18		94	H	4	51	1,477	-	8.0	7.5-9.0	9.3	26.3	9.0	600	A	A	Black	\$148.98	
15356		235/50R18		97	H	4	51	1,609	-	7.5	6.5-8.5	9.6	27.3	9.0	600	A	A	Black	\$153.98	
15524		235/55R18		100	H	4	51	1,764	-	7.5	6.5-8.5	9.6	28.1	9.0	600	A	A	Black	\$150.98	
14714		245/40R18		93	V	4	51	1,433	-	8.5	8.0-9.5	9.8	25.7	9.0	600	A	A	Black	\$141.98	
15351		245/45R18		96	H	4	51	1,565	-	8.0	7.5-9.0	9.6	26.7	9.0	600	A	A	Black	\$150.98	
15357		245/50R18		100	H	4	51	1,764	-	7.5	7.0-8.5	10.0	27.7	9.0	600	A	A	Black	\$163.98	
15525	P	245/55R18		102	H	4	51	1,874	-	7.5	7.0-8.5	10.0	28.6	9.0	600	A	A	Black	\$157.98	
15360		225/55R19		99	H	4	51	1,709	-	7.0	6.0-8.0	9.2	28.8	9.0	600	A	A	Black	\$189.98	

Technical data can be changed without further notice.
For more detailed OE application information, please refer to "Original Equipment 2021" page.



Aria AH7

PREMIUM STANDARD TOURING ALL SEASON

The Aria AH7 includes a four-groove design, which leverages optimal driving performance on wet roads in all four seasons. This tire has a uniformly designed center, which evenly distributes external pressure when contacting the road surface and prevents one-sided wear. The five random pitch variation design reduces pattern noise, and the increased block stiffness and uniform block distribution deliver maximum grip during high-speed cornering.

TOTAL
COVERAGE
WARRANTY
NEXEN TIRE

TREAD WEAR
WARRANTY
80,000 MILES

ROAD HAZARD
WARRANTY
FIRST 3/32"
OR 2 YEARS

ROADSIDE
ASSISTANCE
36 MONTHS

FREE TRIAL
45 DAYS OR
500 MILES

PATTERN CODE: AH7

Product Code	P/LT	Size	XL	LI	SS	PLY	Max Air (psi)	Max Load (lbs)		Rim		Section Width (inch)	Overall Diameter (inch)	Tread Depth (/32")	UTQG			Sidewall	MSRP
								S	D	Meas.	Approved				Tread-wear	Trac.	Temp.		
15190		195/65R15		91	H	4	44	1,356	-	6.0	5.5-7.0	7.9	25.0	10.5	760	A	A	Black	\$87.98
15194		205/55R16		91	H	4	51	1,356	-	6.5	5.5-7.5	8.4	24.9	10.5	760	A	A	Black	\$105.98
15193		205/60R16		92	H	4	44	1,389	-	6.0	5.5-7.5	8.2	25.7	10.5	760	A	A	Black	\$108.98
15191		205/65R16		95	H	4	44	1,521	-	6.0	5.5-7.5	8.2	26.5	10.5	760	A	A	Black	\$104.98
14501		215/60R16		95	T	4	44	1,521	-	6.5	6.0-7.5	8.7	26.1	10.5	760	A	A	Black	\$104.98
15192		215/65R16		98	T	4	44	1,653	-	6.5	6.0-7.5	8.7	27.0	10.5	760	A	A	Black	\$102.98
14311		225/60R16		98	H	4	44	1,653	-	6.5	6.0-8.0	9.0	26.6	10.5	760	A	A	Black	\$105.98
13044		225/65R16		100	T	4	44	1,764	-	6.5	6.0-8.0	9.0	27.5	10.5	760	A	A	Black	\$114.98
13046		235/65R16		103	T	4	44	1,929	-	7.0	6.5-8.5	9.4	28.0	10.5	760	A	A	Black	\$126.98
15693		215/70R16		100	H	4	44	1,764	-	6.5	5.5-7.0	8.7	27.9	10.5	760	A	A	Black	\$110.98
15195		215/55R17		94	H	4	51	1,477	-	7.0	6.0-7.5	8.9	26.3	10.5	760	A	A	Black	\$114.98
15155		215/60R17		96	H	4	44	1,565	-	6.5	6.0-7.5	8.7	27.2	10.5	760	A	A	Black	\$122.98
13043		215/65R17		99	T	4	44	1,709	-	6.5	6.0-7.5	8.7	28.0	10.5	760	A	A	Black	\$126.98
15198		225/50R17		94	H	4	51	1,477	-	7.0	6.0-8.0	9.2	25.9	10.5	760	A	A	Black	\$121.98
13049		225/55R17		97	H	4	51	1,609	-	7.0	6.0-8.0	9.2	26.8	10.5	760	A	A	Black	\$123.98
13041		225/60R17		99	T	4	44	1,709	-	6.5	6.0-8.0	9.0	27.6	10.5	760	A	A	Black	\$129.98
15157		225/65R17		102	H	4	44	1,874	-	6.5	6.0-8.0	9.0	28.5	10.5	760	A	A	Black	\$127.98
13042		235/60R17		102	H	4	44	1,874	-	7.0	6.5-8.5	9.4	28.1	10.5	760	A	A	Black	\$137.98
13047		235/65R17		104	T	4	44	1,984	-	7.0	6.5-8.5	9.4	29.1	10.5	760	A	A	Black	\$141.98
15196		215/55R18		95	T	4	51	1,521	-	7.0	6.0-7.5	8.9	27.3	10.5	760	A	A	Black	\$136.98
15199		225/50R18		95	T	4	51	1,521	-	7.0	6.0-8.0	9.2	26.9	10.5	760	A	A	Black	\$137.98
15197		225/55R18		98	T	4	51	1,653	-	7.0	6.0-8.0	9.2	27.8	10.5	760	A	A	Black	\$152.98
13312		235/55R18		100	H	4	51	1,764	-	7.5	6.5-8.5	9.6	28.1	10.5	760	A	A	Black	\$156.98
13313		235/60R18		103	H	4	44	1,929	-	7.0	6.5-8.5	9.4	29.1	10.5	760	A	A	Black	\$158.98
13048		235/65R18		106	H	4	44	2,094	-	7.0	6.5-8.5	9.4	30.0	10.5	760	A	A	Black	\$154.98



N'Priz AH5

STANDARD TOURING ALL SEASON

The N'Priz AH5 has four wide, longitudinal grooves that improve drainage performance; a rigid shoulder block design to enhance cornering, handling and a quiet, comfortable ride; and a dual kerf design to enhance block stiffness and mileage.

TOTAL
COVERAGE
WARRANTY
NEXEN TIRE

TREAD WEAR
WARRANTY
50,000 MILES

ROAD HAZARD
WARRANTY
FIRST 3/32"
OR 2 YEARS

ROADSIDE
ASSISTANCE
36 MONTHS

PATTERN CODE: AH5

Product Code	P/ LT	Size	XL	LI	SS	PLY	Max Air (psi)	Max Load (lbs)		Rim		Section Width (inch)	Overall Diameter (inch)	Tread Depth (/32")	UTQG			Sidewall	MSRP
								S	D	Meas.	Approved				Tread-wear	Trac.	Temp.		
16406		165/65R14		79	S	4	51	963	-	5.0	4.5-6.0	6.7	22.4	9.0	460	A	A	Black	\$74.98
15011		175/65R14	XL	86	T	4	50	1,168	-	5.0	5.0-6.0	7.0	23.0	9.0	460	A	A	Black	\$60.98
15129		175/70R14		84	T	4	44	1,102	-	5.0	4.5-6.0	7.0	23.7	9.0	460	A	A	Black	\$64.98
12561	P	185/60R14		82	H	4	44	1,047	-	5.5	5.0-6.5	7.4	22.8	9.0	460	A	A	Black	\$68.98
15139	P	185/65R14		85	T	4	44	1,124	-	5.5	5.0-6.5	7.4	23.5	9.0	460	A	A	Black	\$61.98
15399		185/70R14		88	T	4	44	1,235	-	5.5	4.5-6.0	7.4	24.3	9.0	460	A	A	Black	\$65.98
12562	P	195/60R14		85	H	4	44	1,135	-	6.0	5.5-7.0	7.9	23.2	9.0	460	A	A	Black	\$69.98
15400		195/70R14		91	T	4	44	1,356	-	6.0	5.0-6.5	7.9	24.8	9.0	460	A	A	Black	\$67.98
15403		195/75R14		92	S	4	44	1,389	-	5.5	5.0-6.5	7.7	25.5	9.0	460	A	A	White	\$67.98
15404		205/75R14		95	S	4	44	1,521	-	5.5	5.0-7.0	8.0	26.1	9.0	460	A	A	White	\$74.98
15401		215/70R14		96	T	4	44	1,565	-	6.5	5.5-7.0	8.7	25.9	9.0	460	A	A	White	\$80.98
15130		175/65R15		84	H	4	44	1,102	-	5.0	5.0-6.0	7.0	24.0	9.0	460	A	A	Black	\$68.98
15138		185/55R15		82	H	4	51	1,047	-	6.0	5.0-6.5	7.6	23.0	9.0	460	A	A	Black	\$70.98
15134		185/60R15		84	T	4	44	1,102	-	5.5	5.0-6.5	7.4	23.7	9.0	460	A	A	Black	\$71.98
14658		185/65R15		88	H	4	44	1,235	-	5.5	5.0-6.5	7.4	24.4	9.0	460	A	A	Black	\$69.98
12558	P	195/55R15	XL	87	V	4	50	1,201	-	6.0	5.5-7.0	7.9	23.4	9.0	460	A	A	Black	\$78.98
15145	P	195/60R15		87	T	4	44	1,190	-	6.0	5.5-7.0	7.9	24.2	9.0	460	A	A	Black	\$73.98
15140	P	195/65R15		89	T	4	44	1,279	-	6.0	5.5-7.0	7.9	25.0	10.0	460	A	A	Black	\$73.98
12564	P	205/60R15		90	H	4	44	1,301	-	6.0	5.5-7.5	8.2	24.7	9.0	460	A	A	Black	\$81.98
15141	P	205/65R15		92	T	4	44	1,400	-	6.0	5.5-7.5	8.2	25.5	9.0	460	A	A	Black	\$80.98
14661		205/70R15		96	T	4	44	1,565	-	6.0	5.0-7.0	8.2	26.3	9.0	460	A	A	Black	\$78.98
15405		205/75R15		97	S	4	44	1,609	-	5.5	5.0-7.0	8.0	27.1	9.0	460	A	A	White	\$77.98
15142	P	215/65R15		95	T	4	44	1,510	-	6.5	6.0-7.5	8.7	26.0	9.0	460	A	A	Black	\$85.98
14662		215/70R15		98	T	4	44	1,653	-	6.5	5.5-7.0	8.7	26.9	9.0	460	A	A	Black	\$83.98

CONTINUED ON NEXT PAGE ...

PERFORMANCE RATINGS

BRAKING
7

COMFORT
8

FUEL EFFICIENCY
6

HANDLING
7

WEAR LIFE
7

N'Priz AH5

... CONTINUED FROM PREVIOUS PAGE

PATTERN CODE: AH5

Product Code	P/ LT	Size	XL	LI	SS	PLY	Max Air (psi)	Max Load (lbs)		Rim		Section Width (inch)	Overall Diameter (inch)	Tread Depth (/32")	UTQG			Sidewall	MSRP
								S	D	Meas.	Approved				Tread-wear	Trac.	Temp.		
15406		215/75R15		100	S	4	44	1,764	-	6.0	5.5-7.0	8.5	27.7	9.0	460	A	A	White	\$73.98
15402		225/70R15		100	T	4	44	1,764	-	6.5	6.0-7.5	9.0	27.4	9.0	460	A	A	White	\$84.98
15407		225/75R15		102	S	4	44	1,874	-	6.0	6.0-7.5	8.8	28.3	9.0	460	A	A	White	\$80.98
15408		235/75R15	XL	109	S	4	50	2,271	-	6.5	6.0-8.0	9.3	28.9	9.0	460	A	A	White	\$89.98
15148	P	205/55R16		89	T	4	44	1,279	-	6.5	5.5-7.5	8.4	24.9	10.0	460	A	A	Black	\$91.98
15146	P	205/60R16		91	T	4	44	1,356	-	6.0	5.5-7.5	8.2	25.7	9.0	460	A	A	Black	\$89.98
15131		205/65R16		95	T	4	44	1,521	-	6.0	5.5-7.5	8.2	26.5	9.0	460	A	A	Black	\$90.98
15147		215/60R16		95	T	4	44	1,521	-	6.5	6.0-7.5	8.7	26.1	9.0	460	A	A	Black	\$91.98
15143		215/65R16		98	T	4	44	1,653	-	6.5	6.0-7.5	8.7	27.0	9.0	460	A	A	Black	\$90.98
15136		225/60R16		98	T	4	44	1,653	-	6.5	6.0-8.0	9.0	26.6	9.0	460	A	A	Black	\$94.98
15137		235/60R16		100	T	4	44	1,764	-	7.0	6.5-8.5	9.4	27.1	9.0	460	A	A	Black	\$99.98
15144		235/65R16		103	T	4	44	1,929	-	7.0	6.5-8.5	9.4	28.0	9.0	460	A	A	Black	\$104.98
15152		215/50R17		91	H	4	51	1,356	-	7.0	6.0-7.5	8.9	25.5	9.0	460	A	A	Black	\$105.98
15149		215/55R17		94	H	4	51	1,477	-	7.0	6.0-7.5	8.9	26.3	9.0	460	A	A	Black	\$105.98
13022		215/60R17		96	T	4	44	1,565	-	6.5	6.0-7.5	8.7	27.2	9.0	460	A	A	Black	\$103.98
15132		215/65R17		99	T	4	44	1,709	-	6.5	6.0-7.5	8.7	28.0	9.0	460	A	A	Black	\$111.98
15153		225/50R17		94	T	4	51	1,477	-	7.0	6.0-8.0	9.2	25.9	9.0	460	A	A	Black	\$103.98
15150		225/55R17		97	T	4	36	1,609	-	7.0	6.0-8.0	9.2	26.8	9.0	460	A	A	Black	\$111.98
15135		225/60R17		99	T	4	44	1,709	-	6.5	6.0-8.0	9.0	27.6	9.0	460	A	A	Black	\$112.98
15133		225/65R17		102	T	4	44	1,874	-	6.5	6.0-8.0	9.0	28.5	9.0	460	A	A	Black	\$109.98
15151		235/55R17		99	H	4	51	1,709	-	7.5	6.5-8.5	9.6	27.2	9.0	460	A	A	Black	\$111.98

Technical data can be changed without further notice.
White: White Ribbon Type (0.6" width)



SB-802

STANDARD TOURING ALL SEASON

TOTAL
COVERAGE
WARRANTY
NEXEN TIRE

TREAD WEAR
WARRANTY
N/A

ROAD HAZARD
WARRANTY
N/A

ROADSIDE
ASSISTANCE
36 MONTHS

PATTERN CODE: SB802

Product Code	P/ LT	Size	XL	LI	SS	PLY	Max Air (psi)	Max Load (lbs)		Rim		Section Width (inch)	Overall Diameter (inch)	Tread Depth (/32")	UTQG			Sidewall	MSRP
								S	D	Meas.	Approved				Tread-wear	Trac.	Temp.		
11766		165/80R15		87	T	4	36	1,201	-	4.5	4.0-5.5	6.5	25.4	10.0	320	A	B	Black	\$71.98

Technical data can be changed without further notice.



ROADIAN HP

STREET SPORT TRUCK ALL SEASON

The Roadian HP includes a V-shaped directional pattern design, which provides high-performance grip on any road surface. This tire also features a five random pitch variation design that reduces pattern noise, wide and deep directional grooves to provide excellent drainage and braking performance, while the large shoulder blocks maximize cornering grip.

TOTAL
COVERAGE
WARRANTY
NEXEN TIRE


TREAD WEAR
WARRANTY
40,000 MILES


ROAD HAZARD
WARRANTY
FIRST 3/32" OR 2 YEARS


ROADSIDE
ASSISTANCE
36 MONTHS

PATTERN CODE: RO HP

Product Code	P/LT	Size	XL	LI	SS	PLY	Max Air (psi)	Max Load (lbs)		Rim		Section Width (inch)	Overall Diameter (inch)	Tread Depth (/32")	UTQG			Sidewall	MSRP
								S	D	Meas.	Approved				Tread-wear	Trac.	Temp.		
11006		255/60R17		106	V	4	44	2,094	-	7.5	7.0-9.0	10.2	29.1	11.0	460	A	A	Black	\$154.98
15451		265/60R17		108	V	4	44	2,205	-	8.0	7.5-9.5	10.7	29.5	11.0	460	A	A	Black	\$159.98
15453		275/60R17		110	V	4	44	2,337	-	8.0	7.5-9.5	11.0	30.0	11.0	460	A	A	Black	\$174.98
15608		265/60R18		110	H	4	44	2,337	-	8.0	7.5-9.5	10.7	30.5	11.0	460	A	A	Black	\$162.98
15455		285/60R18		116	V	4	44	2,756	-	8.5	8.0-10.0	11.5	31.5	11.0	460	A	A	Black	\$174.98
15467		255/50R20	XL	109	V	4	50	2,271	-	8.0	7.0-9.0	10.4	30.1	11.0	460	A	A	Black	\$168.98
15469		265/50R20	XL	111	V	4	50	2,403	-	8.5	7.5-9.5	10.9	30.5	11.0	460	A	A	Black	\$170.98
15470		275/40R20	XL	106	V	4	50	2,094	-	9.5	9.0-11.0	10.9	28.7	11.0	460	A	A	Black	\$163.98
15454		275/45R20	XL	110	V	4	50	2,337	-	9.0	8.5-10.5	10.7	29.8	11.0	460	A	A	Black	\$155.98
15471		275/55R20	XL	117	V	4	50	2,833	-	8.5	7.5-9.5	11.2	31.9	11.0	460	A	A	Black	\$160.98
15473		285/50R20	XL	116	V	4	50	2,756	-	9.0	8.0-10.0	11.7	31.3	11.0	460	A	A	Black	\$164.98
15463		295/40R20		106	V	4	44	2,094	-	10.5	10.0-11.5	11.9	29.3	11.0	460	A	A	Black	\$176.98
15459		295/45R20	XL	114	V	4	50	2,601	-	10.0	9.5-11.0	11.7	30.5	11.0	460	A	A	Black	\$173.98
15464		255/30R22	XL	95	V	4	50	1,521	-	9.0	8.5-9.5	10.2	28.1	11.0	460	A	A	Black	\$162.98
15456		265/35R22	XL	102	V	4	50	1,874	-	9.5	9.0-10.5	10.7	29.3	11.0	460	A	A	Black	\$153.98
15472		285/35R22	XL	106	V	4	50	2,094	-	10.0	9.5-11.0	11.4	29.9	11.0	460	A	A	Black	\$206.98
15466		285/45R22	XL	114	V	4	50	2,601	-	9.5	9.0-10.5	11.2	32.1	11.0	460	A	A	Black	\$196.98
15457		295/30R22	XL	103	V	4	50	1,929	-	10.5	10.0-11.0	11.9	29.0	11.0	460	A	A	Black	\$195.98
15460		305/40R22	XL	114	V	4	50	2,601	-	11.0	10.0-12.0	12.3	31.6	11.0	460	A	A	Black	\$176.98
15452		305/45R22	XL	118	V	4	50	2,910	-	10.0	9.5-11.5	11.9	32.8	11.0	460	A	A	Black	\$174.98
15474		295/35R24	XL	110	V	4	50	2,337	-	10.5	10.0-11.5	11.9	32.1	11.0	460	A	A	Black	\$270.98
15354		305/35R24	XL	112	V	4	50	2,469	-	11.0	10.0-12.0	12.3	32.4	11.0	460	A	A	Black	\$230.98

Technical data can be changed without further notice.

PERFORMANCE RATINGS


BRAKING
8


COMFORT
7


FUEL EFFICIENCY
8


HANDLING
9


WEAR LIFE
8



ROADIAN GTX

CUV/SUV TOURING

The Roadian GTX delivers on every count. Crossovers and SUVs are more popular than ever, and their segment of the market is only increasing. Drivers count on their versatility and dependability, from cross-country road trips to trips to the store. They need a tire with a long tread life, all-season traction, the best mileage and a comfortable ride. The Nexen Roadian GTX touring tire meets these needs and exceeds expectations.

TOTAL
COVERAGE
WARRANTY
NEXEN TIRE


TREAD WEAR
WARRANTY
70,000 MILES


ROAD HAZARD
WARRANTY
FIRST 3/32" OR 2 YEARS


ROADSIDE
ASSISTANCE
36 MONTHS


FREE TRIAL
45 DAYS OR
500 MILES

OE FITMENT ON



PATTERN CODE: GTX

Product Code	P/ LT	Size	XL	LI	SS	PLY	Max Air (psi)	Max Load (lbs)		Rim		Section Width (inch)	Overall Diameter (inch)	Tread Depth (/32")	UTQG			Sidewall	MSRP	OE
								S	D	Meas.	Approved				Tread-wear	Trac.	Temp.			
17051		225/60R17		99	H	4	51	1,709	-	6.5	6.0-8.0	9.0	27.6	9.5	680	A	A	Black	\$123.98	
17060		225/65R17		102	V	4	51	1,874	-	6.5	6.0-8.0	9.0	28.5	9.5	680	A	A	Black	\$128.98	
17054		235/60R17		102	H	4	51	1,874	-	7.0	6.5-8.5	9.4	28.1	9.5	680	A	A	Black	\$128.98	
16581		235/65R17		104	H	4	51	1,984		7.0	6.5-8.5	9.4	29.1	9.5	600	A	A	Black	\$132.98	Hyundai, Kia
17136		235/65R17		104	H	4	51	1,984		7.0	6.5-8.5	9.4	29.1	9.5	600	A	A	Black	\$132.98	Kia
17061		245/65R17		107	V	4	51	2,149	-	7.0	7.0-8.5	9.8	29.5	9.5	680	A	A	Black	\$136.98	
17052		225/60R18	XL	104	H	4	50	1,984	-	6.5	6.0-8.0	9.0	28.6	9.5	680	A	A	Black	\$141.98	
17045		235/55R18	XL	104	V	4	50	1,984	-	7.5	6.5-8.5	9.6	28.1	9.5	680	A	A	Black	\$143.98	
17142		235/60R18		103	H	4	51	1,929		7.0	6.5-8.5	9.4	29.1	9.5	600	A	A	Black	\$158.98	
17571		235/65R18		106	H	4	51	2,094	-	7.0	6.5-8.5	9.4	30.0	9.5	600	A	A	Black	\$156.98	
17055		245/60R18		105	H	4	51	2,039	-	7.0	7.0-8.5	9.8	29.6	9.5	680	A	A	Black	\$160.98	
17048		255/55R18	XL	109	V	4	50	2,271	-	8.0	7.0-9.0	10.4	29.0	9.5	680	A	A	Black	\$173.98	
17056		255/60R18		108	H	4	51	2,205	-	7.5	7.0-9.0	10.2	30.0	9.5	680	A	A	Black	\$168.98	
17062		255/65R18		111	T	4	51	2,403	-	7.5	7.0-9.0	10.2	31.1	9.5	680	A	A	Black	\$179.98	
17057		265/60R18		110	H	4	51	2,337	-	8.0	7.5-9.5	10.7	30.5	9.5	680	A	A	Black	\$159.98	

CONTINUED ON NEXT PAGE ...

PERFORMANCE RATINGS


BRAKING
8


COMFORT
10


FUEL EFFICIENCY
9


HANDLING
10


WEAR LIFE
10


SNOW TRACTION
6

ROADIAN GTX

... CONTINUED FROM PREVIOUS PAGE

PATTERN CODE: GTX

Product Code	P/ LT	Size	XL	LI	SS	PLY	Max Air (psi)	Max Load (lbs)		Rim		Section Width (inch)	Overall Diameter (inch)	Tread Depth (/32")	UTQG			Sidewall	MSRP	OE
								S	D	Meas.	Approved				Tread-wear	Trac.	Temp.			
17043		225/55R19	XL	103	V	4	50	1,929	-	7.0	6.0-8.0	9.2	28.8	9.5	680	A	A	Black	\$178.98	
17033		235/45R19		95	H	4	51	1,521	-	8.0	7.5-9.0	9.3	27.4	9.5	680	A	A	Black	\$168.98	
17037		235/50R19		99	H	4	51	1,709	-	7.5	6.5-8.5	9.6	28.3	9.5	680	A	A	Black	\$173.98	
16583		235/55R19		101	H	4	51	1,819		7.5	6.5-8.5	9.6	29.2	9.5	600	A	A	Black	\$187.98	
17047		245/55R19		103	V	4	51	1,929	-	7.5	7.0-8.5	10.0	29.6	9.5	680	A	A	Black	\$172.98	
17407		255/50R19	XL	107	H	4	50	2,149	-	8.0	7.0-9.0	10.4	29.1	9.5	680	A	A	Black	\$192.98	
17414		255/55R19	XL	111	V	4	50	2,403	-	8.0	7.0-9.0	10.4	30.0	9.5	680	A	A	Black	\$189.98	
17566		255/60R19		109	H	4	51	2,271	-	7.5	7.0-9.0	10.2	31.1	9.5	680	A	A	Black	\$181.98	
17413		275/55R19		111	V	4	51	2,403	-	8.5	7.5-9.5	11.2	30.9	9.5	680	A	A	Black	\$186.98	
17046		235/55R20		102	V	4	51	1,874	-	7.5	6.5-8.5	9.6	30.2	9.5	680	A	A	Black	\$191.98	
17038		245/50R20		102	V	4	51	1,874	-	7.5	7.0-8.5	10.0	29.7	9.5	680	A	A	Black	\$172.98	
16640	P	255/45R20		101	W	4	51	1,819		8.5	8.0-9.5	10.0	29.1	9.5	600	A	A	Black	\$175.98	Mitsubishi
17039		255/50R20	XL	109	V	4	50	2,271	-	8.0	7.0-9.0	10.4	30.1	9.5	680	A	A	Black	\$182.98	
17049		255/55R20		107	H	4	51	2,149	-	8.0	7.0-9.0	10.4	31.0	9.5	680	A	A	Black	\$156.98	
17410		265/45R20	XL	108	H	4	50	2,205	-	9.0	8.5-10.0	10.5	29.4	9.5	680	A	A	Black	\$158.98	
17040		265/50R20	XL	111	V	4	50	2,403	-	8.5	7.5-9.5	10.9	30.5	9.5	680	A	A	Black	\$180.98	
17406		275/40R20	XL	106	W	4	50	2,094	-	9.5	9.0-11.0	10.9	28.7	9.5	680	A	A	Black	\$170.98	
17408		275/45R20	XL	110	V	4	50	2,337	-	9.0	8.5-10.5	10.7	29.8	9.5	680	A	A	Black	\$182.98	
17409		275/55R20		113	H	4	51	2,535	-	8.5	7.5-9.5	11.2	31.9	9.5	680	A	A	Black	\$178.98	
17412		285/45R22	XL	114	H	4	50	2,601	-	9.5	9.0-10.5	11.2	32.1	9.5	680	A	A	Black	\$197.98	

Technical data can be changed without further notice.
. For more detail OE application information, please refer to "Original Equipment 2021" page.

ROADIAN HTX RH5
HIGHWAY TERRAIN



The Roadian HTX RH5 contains a four-channel groove design in forward direction to enhance drainage and hydroplaning performance on wet roads. The three- and four-division tread design improves grip while enhancing wear performance. The reinforced shoulder block design results in improved cornering and handling, while a center rib block design optimizes grip and steering performance.

TOTAL
COVERAGE
WARRANTY
NEXEN TIRE

TREAD WEAR
WARRANTY
65,000 MILES (P)
40,000 MILES (LT)

ROAD HAZARD
WARRANTY
FIRST 3/32"
OR 2 YEARS

ROADSIDE
ASSISTANCE
36 MONTHS

FREE TRIAL
45 DAYS OR
500 MILES

PATTERN CODE: RH5 (P) METRIC

OE FITMENT ON



Product Code	P/LT	Size	XL	LI	SS	PLY	Max Air (psi)	Max Load (lbs)		Rim		Section Width (inch)	Overall Diameter (inch)	Tread Depth (/32")	UTQG			Sidewall	MSRP	OE
								S	D	Meas.	Approved				Tread-wear	Trac.	Temp.			
13137		225/70R15		100	S	4	51	1,764	-	6.5	6.0-7.5	9.0	27.4	12.0	640	A	A	White	\$106.98	
13138		235/70R15		103	S	4	51	1,929	-	7.0	6.0-8.0	9.4	28.0	12.0	640	A	A	White	\$112.98	
13128		235/75R15	XL	109	S	4	50	2,271	-	6.5	6.0-8.0	9.3	28.9	12.0	640	A	A	White	\$110.98	
13132		265/70R15		112	S	4	51	2,469	-	8.0	7.0-9.0	10.7	29.6	12.0	640	A	A	White	\$142.98	
12692		225/70R16		103	T	4	51	1,929	-	6.5	6.0-7.5	9.0	28.4	12.0	640	A	A	White	\$118.98	
13133		225/75R16	XL	108	S	4	50	2,205	-	6.0	6.0-7.5	8.8	29.3	12.0	640	A	A	White	\$121.98	
11725		235/70R16		106	T	4	51	2,094	-	7.0	6.0-8.0	9.4	29.0	12.0	640	A	A	White	\$125.98	
12694		235/75R16		108	T	4	51	2,205	-	6.5	6.0-8.0	9.3	29.8	12.0	640	A	A	White	\$126.98	
14397		245/70R16	RF	111	T	4	50	2,403	-	7.0	6.5-8.0	9.8	29.5	12.0	640	A	A	White	\$133.98	
13130		245/75R16		111	S	4	51	2,403	-	7.0	6.5-8.0	9.8	30.5	12.0	640	A	A	White	\$130.98	
12695		255/65R16		109	H	4	51	2,271	-	7.5	7.0-9.0	10.2	29.1	12.0	640	A	A	White	\$145.98	
11714		255/70R16		111	S	4	51	2,403	-	7.5	6.5-8.5	10.2	30.1	12.0	640	A	A	White	\$141.98	
11716		265/70R16		112	S	4	51	2,469	-	8.0	7.0-9.0	10.7	30.6	12.0	640	A	A	White	\$145.98	
13127		265/75R16		116	T	4	51	2,756	-	7.5	7.0-9.0	10.5	31.7	12.0	640	A	A	White	\$142.98	
13970		275/70R16		114	S	4	51	2,601	-	8.0	7.0-9.0	11.0	31.2	12.0	640	A	A	Black	\$170.98	

CONTINUED ON NEXT PAGE ...

PERFORMANCE RATINGS

BRACING
8

COMFORT
9

FUEL EFFICIENCY
8

HANDLING
8

WEAR LIFE
9



ROADIAN HTX RH5

... CONTINUED FROM PREVIOUS PAGE

PATTERN CODE: RH5 (P) METRIC

Product Code	P/LT	Size	XL	LI	SS	PLY	Max Air (psi)	Max Load (lbs)		Rim		Section Width (inch)	Overall Diameter (inch)	Tread Depth (/32")	UTQG			Sidewall	MSRP	OE
								S	D	Meas.	Approved				Tread-wear	Trac.	Temp.			
13131		225/65R17		102	H	4	51	1,874	-	6.5	6.0-8.0	9.0	28.5	11.0	640	A	A	Black	\$126.98	
14399		235/65R17	RF	108	H	4	50	2,205	-	7.0	6.5-8.5	9.4	29.1	11.0	640	A	A	Black	\$147.98	
13142		235/70R17	XL	111	T	4	50	2,403	-	7.0	6.0-8.0	9.4	30.0	12.0	640	A	A	White	\$151.98	
14396		245/65R17	RF	111	H	4	50	2,403	-	7.0	7.0-8.5	9.8	29.5	11.0	640	A	A	White	\$148.98	
11729		245/70R17		110	T	4	51	2,337	-	7.0	6.5-8.0	9.8	30.6	12.0	640	A	A	White	\$147.98	
13143		255/65R17		110	S	4	51	2,337	-	7.5	7.0-9.0	10.2	30.1	12.0	640	A	A	White	\$160.98	
11740		255/70R17		112	T	4	51	2,469	-	7.5	6.5-8.5	10.2	31.1	12.0	640	A	A	White	\$158.98	
13141		265/65R17		112	H	4	51	2,469	-	8.0	7.5-9.5	10.7	30.6	12.0	640	A	A	Black	\$165.98	
11730		265/70R17		115	T	4	51	2,679	-	8.0	7.0-9.0	10.7	31.7	12.0	640	A	A	White	\$157.98	
13136		235/60R18		103	V	4	51	1,929	-	7.0	6.5-8.5	9.4	29.1	11.0	640	A	A	Black	\$153.98	
14398		235/65R18	RF	110	H	4	50	2,337	-	7.0	6.5-8.5	9.4	30.0	11.0	640	A	A	Black	\$147.98	
13140		245/60R18		105	H	4	51	2,039	-	7.0	7.0-8.5	9.8	29.6	11.0	640	A	A	Black	\$157.98	
12696		255/65R18		111	T	4	51	2,403	-	7.5	7.0-9.0	10.2	31.1	12.0	640	A	A	Black	\$172.98	
13134		255/70R18		113	T	4	51	2,535	-	7.5	6.5-8.5	10.2	32.1	12.0	640	A	A	Black	\$175.98	
13147		265/60R18		110	H	4	51	2,337	-	8.0	7.5-9.5	10.7	30.5	12.0	640	A	A	Black	\$166.98	
13139		265/65R18		114	S	4	51	2,601	-	8.0	7.5-9.5	10.7	31.5	12.0	640	A	A	Black	\$169.98	
13670		265/70R18		116	S	4	51	2,756	-	8.0	7.0-9.0	10.7	32.6	12.0	640	A	A	Black	\$177.98	
11720		275/65R18		116	T	4	51	2,756	-	8.0	7.5-9.5	11.0	32.1	12.0	640	A	A	Black	\$183.98	
14327		255/60R19		109	H	4	51	2,271	-	7.5	7.0-9.0	10.2	31.1	12.0	640	A	A	Black	\$182.98	
15115		245/60R20		107	H	4	51	2,149	-	7.0	7.0-8.5	9.8	31.5	11.0	640	A	A	Black	\$196.98	
15278		275/55R20		113	T	4	51	2,535	-	8.5	7.5-9.5	11.2	31.9	10.5	640	A	A	Black	\$178.98	RAM
13144		275/60R20		115	S	4	51	2,679	-	8.0	7.5-9.5	11.0	33.0	12.0	640	A	A	Black	\$183.98	
16039		285/45R22	XL	114	H	4	50	2,601	-	9.5	9.0-10.5	11.2	32.1	11.0	640	A	A	Black	\$225.98	

PATTERN CODE: RH5 (LT) METRIC

Product Code	P/LT	Size	XL	LI	SS	PLY	Max Air (psi)	Max Load (lbs)		Rim		Section Width (inch)	Overall Diameter (inch)	Tread Depth (/32")	UTQG			Sidewall	MSRP	OE
								S	D	Meas.	Approved				Tread-wear	Trac.	Temp.			
11857	LT	215/85R16		115/112	Q	10	80	2,680	2,470	6.0	5.5-7.0	8.5	30.4	13.0	-	-	-	Black	\$136.98	
12685	LT	225/75R16		115/112	Q	10	80	2,680	2,470	6.0	6.0-7.0	8.8	29.3	13.0	-	-	-	Black	\$141.98	
11859	LT	235/85R16		120/116	Q	10	80	3,042	2,778	6.5	6.0-7.5	9.3	31.7	13.0	-	-	-	Black	\$153.98	
11851	LT	245/75R16		120/116	Q	10	80	3,042	2,778	7.0	6.5-7.5	9.8	30.5	13.0	-	-	-	Black	\$156.98	
11854	LT	265/75R16		123/120	Q	10	80	3,415	3,085	7.5	7.0-8.0	10.5	31.7	13.0	-	-	-	White	\$168.98	
13353	LT	235/80R17		120/117	R	10	80	3,085	2,835	6.5	6.0-7.5	9.3	31.8	15.0	-	-	-	Black	\$181.98	RAM
11855	LT	245/75R17		121/118	S	10	80	3,195	2,910	7.0	6.5-7.5	9.8	31.5	13.0	-	-	-	Black	\$195.98	
12812	LT	265/70R17		121/118	R	10	80	3,195	2,910	8.0	7.0-8.5	10.7	31.7	13.0	-	-	-	White	\$189.98	
15116	LT	275/65R18		123/120	S	10	80	3,415	3,085	8.0	7.5-9.0	11.0	32.1	13.5	-	-	-	White	\$211.98	
14007	LT	31X10.50R15		109	S	6	50	2,270	-	8.5	7.0-9.0	10.6	30.5	13.5	-	-	-	Black	\$158.98	

Technical data can be changed without further notice.
For more detailed OE application information, please refer to "Original Equipment 2021" page.

ROADIAN AT PRO RA8

ALL TERRAIN

The Roadian AT Pro RA8 is comprised of a zig-zag sipe design and an open outside shoulder design to improve off-road performance with optimal mud extraction and heat reduction. The sipe-in-groove design prevents pebbles from getting stuck and improves mud-extraction performance, while the multi-sequence tread design on the center and shoulder deliver optimal noise, wear and drainage performance. All sizes are Three-Peak Mountain Snowflake certified (excludes OEM & Flotation).



TOTAL
COVERAGE
WARRANTY
NEXEN TIRE



TREAD WEAR
WARRANTY
50,000 MILES (P)
40,000 MILES (LT)



ROAD HAZARD
WARRANTY
FIRST 3/32"
OR 2 YEARS



ROADSIDE
ASSISTANCE
36 MONTHS



FREE TRIAL
45 DAYS OR
500 MILES

PATTERN CODE: RA8 (P) METRIC

OE FITMENT ON



Product Code	P/LT	Size	XL	LI	SS	PLY	Max Air (psi)	Max Load (lbs)		Rim		Section Width (inch)	Overall Diameter (inch)	Tread Depth (/32")	UTQG			Sidewall	MSRP	F.E.T.	OE
								S	D	Meas.	App.				Tread-wear	Trac.	Temp.				
14392		235/75R15	RF	109	S	4	50	2,271	-	6.5	6.0-8.0	9.3	28.9	13.0	560	A	B	White	\$119.98		
12764		235/70R16		106	S	4	51	2,094	-	7.0	6.0-8.0	9.4	29.0	13.0	560	A	B	White	\$130.98		
14393		245/70R16	RF	111	S	4	50	2,403	-	7.0	6.5-8.0	9.8	29.5	13.0	560	A	B	Black	\$142.98		
12771		245/75R16		111	S	4	51	2,403	-	7.0	6.5-8.0	9.8	30.5	13.0	560	A	B	White	\$133.98		
12760		255/70R16		111	S	4	51	2,403	-	7.5	6.5-8.5	10.2	30.1	13.0	560	A	B	White	\$141.98		
12758		265/70R16		112	S	4	51	2,469	-	8.0	7.0-9.0	10.7	30.6	13.0	560	A	B	White	\$149.98		
12759		265/75R16		116	S	4	51	2,756	-	7.5	7.0-9.0	10.5	31.7	13.0	560	A	B	White	\$150.98		
15211		235/75R17		108	S	4	51	2,205	-	6.5	6.0-8.0	9.3	30.9	13.0	560	A	B	Black	\$162.98		
14436		245/65R17	RF	111	S	4	50	2,403	-	7.0	7.0-8.5	9.8	29.5	13.0	560	A	B	Black	\$142.98		
12784		245/70R17		110	S	4	51	2,337	-	7.0	6.5-8.0	9.8	30.6	13.0	560	A	B	White	\$153.98		
16049	P	255/70R17		110	S	4	51	2,337	-	7.5	6.5-8.5	10.2	31.1	13.0	560	A	B	White	\$154.98		
16060	P	255/75R17		113	S	4	51	2,535	-	7.0	6.5-8.5	10.0	32.0	13.0	560	A	B	White	\$166.98		
12785		265/65R17		112	T	4	51	2,469	-	8.0	7.5-9.5	10.7	30.6	13.0	560	A	B	White	\$167.98		
13637		265/70R17		115	S	4	51	2,679	-	8.0	7.0-9.0	10.7	31.7	13.0	560	A	B	White	\$157.98		
16061	P	285/70R17		117	T	4	51	2,833	-	8.5	7.5-9.5	11.5	32.8	13.0	560	A	B	Black	\$187.98		
15209		255/70R18		113	T	4	51	2,535	-	7.5	6.5-8.5	10.2	32.1	13.0	560	A	B	White	\$183.98		
13123		265/60R18		110	T	4	51	2,337	-	8.0	7.5-9.5	10.7	30.5	13.0	560	A	B	Black	\$186.98		

CONTINUED ON NEXT PAGE ...

PERFORMANCE RATINGS

BRAKING
9

COMFORT
7

FUEL EFFICIENCY
8

OFF ROAD
9

WEAR LIFE
8

3 Peak Mountain
Snowflake Certified
3PMSF: from DOT 2319
except RAM OEM and
Flotation sizes



ROADIAN AT PRO RA8

... CONTINUED FROM PREVIOUS PAGE

PATTERN CODE: RA8 (P) METRIC

Product Code	P/LT	Size	XL	LI	SS	PLY	Max Air (psi)	Max Load (lbs)		Rim		Section Width (inch)	Overall Diameter (inch)	Tread Depth (/32")	UTQG			Sidewall	MSRP	F.E.T.	OE
								S	D	Meas.	App.				Tread-wear	Trac.	Temp.				
12780		265/65R18		114	S	4	51	2,601	-	8.0	7.5-9.5	10.7	31.5	13.0	560	A	B	Black	\$194.98		
15210		265/70R18		116	S	4	51	2,756	-	8.0	7.0-9.0	10.7	32.6	13.0	560	A	B	White	\$191.98		
12774		275/65R18		116	T	4	51	2,756	-	8.0	7.5-9.5	11.0	32.1	13.0	560	A	B	Black	\$194.98		
12783		275/55R20	XL	117	T	4	50	2,833	-	8.5	7.5-9.5	11.2	31.9	12.0	560	A	B	Black	\$192.98		
13121		275/60R20		115	S	4	51	2,679	-	8.0	7.5-9.5	11.0	33.0	12.0	560	A	B	Black	\$192.98		
16055		285/45R22	XL	114	H	4	50	2,601	-	9.5	9.0-10.5	11.2	32.1	12.5	560	A	B	Black	\$246.98		
16059		305/45R22	XL	118	T	4	50	2,910	-	10.0	9.5-11.5	11.9	32.8	12.5	560	A	B	Black	\$290.98		

PATTERN CODE: RA8 (LT) METRIC

Product Code	P/LT	Size	XL	LI	SS	PLY	Max Air (psi)	Max Load (lbs)		Rim		Section Width (inch)	Overall Diameter (inch)	Tread Depth (/32")	UTQG			Sidewall	MSRP	F.E.T.	OE
								S	D	Meas.	App.				Tread-wear	Trac.	Temp.				
12744	LT	235/75R15		104/101	R	6	50	1,985	1,820	6.5	6.0-7.0	9.3	28.9	16.0	-	-	-	White	\$134.98		
13965	LT	215/85R16		115/112	R	10	80	2,680	2,470	6.0	5.5-7.0	8.5	30.4	16.0	-	-	-	White	\$153.98		
12743	LT	225/75R16		115/112	R	10	80	2,680	2,470	6.0	6.0-7.0	8.8	29.3	16.0	-	-	-	Black	\$149.98		
12748	LT	235/85R16		120/116	R	10	80	3,042	2,778	6.5	6.0-7.5	9.3	31.7	16.0	-	-	-	Black	\$156.98		
12740	LT	245/75R16		120/116	R	10	80	3,042	2,778	7.0	6.5-7.5	9.8	30.5	16.0	-	-	-	White	\$164.98		
12738	LT	265/75R16		123/120	R	10	80	3,415	3,085	7.5	7.0-8.0	10.5	31.7	16.0	-	-	-	White	\$173.98		
16278	LT	285/75R16		126/123	R	10	80	3,750	3,415	8.0	7.5-9.0	11.3	32.8	16.0	-	-	-	White	\$194.98	2.36	
16286	LT	315/75R16		127/124	R	10	65	3,860	1,600	8.5	8.0-11.0	12.3	34.6	16.0	-	-	-	Black	\$231.98	3.40	
13354	LT	235/80R17		120/117	R	10	80	3,085	2,835	6.5	6.0-7.5	9.3	31.8	15.0	-	-	-	White	\$191.98		RAM
13113	LT	245/70R17		119/116	S	10	80	3,000	2,755	7.0	6.5-8.0	9.8	30.6	16.0	-	-	-	White	\$172.98		
12746	LT	245/75R17		121/118	S	10	80	3,195	2,910	7.0	6.5-7.5	9.8	31.5	16.0	-	-	-	Black	\$186.98		
12735	LT	265/70R17		121/118	S	10	80	3,195	2,910	8.0	7.0-8.5	10.7	31.7	16.0	-	-	-	Black	\$189.98		
+ 15218	LT	285/70R17		121/118	S	10	80	3,195	2,910	8.5	7.5-9.0	11.5	32.8	16.0	-	-	-	Black	\$214.98		
+ 16285	LT	285/75R17		121/118	S	10	80	3,195	2,910	8.0	7.5-9.5	11.3	33.9	16.0	-	-	-	Black	\$201.98		
+ 16283	LT	315/70R17		121/118	S	10	65	3,195	2,910	9.5	8.0-11.0	12.7	34.4	16.0	-	-	-	Black	\$258.98		
+ 15217	LT	265/70R18		124/121	S	10	80	3,527	3,197	8.0	7.0-8.5	10.7	32.6	16.0	-	-	-	White	\$196.98	0.26	
+ 15215	LT	275/65R18		123/120	S	10	80	3,415	3,085	8.0	7.5-9.0	11.0	32.1	16.0	-	-	-	White	\$217.98		
14760	LT	275/70R18		125/122	R	10	80	3,640	3,305	8.0	7.0-8.5	11.0	33.2	14.0	-	-	-	Black	\$220.98	1.32	RAM
+ 15216	LT	285/65R18		125/122	S	10	80	3,640	3,305	8.5	8.0-10.0	11.5	32.6	16.0	-	-	-	Black	\$251.98	1.32	
+ 16280	LT	295/70R18		129/126	S	10	80	4,080	3,750	8.5	7.5-10.0	11.8	34.3	16.0	-	-	-	Black	\$271.98	5.48	
+ 15214	LT	265/60R20		121/118	S	10	80	3,195	2,910	8.0	7.5-9.5	10.7	32.5	16.0	-	-	-	Black	\$256.98		
+ 16063	LT	275/55R20		120/117	S	10	80	3,085	2,835	8.5	7.5-9.5	11.2	31.9	16.0	-	-	-	Black	\$220.98		
+ 16062	LT	275/60R20		123/120	S	10	80	3,415	3,085	8.0	7.5-9.5	11.0	33.0	16.0	-	-	-	Black	\$262.98		
+ 13111	LT	275/65R20		126/123	S	10	80	3,750	3,415	8.0	7.5-9.5	11.0	34.1	16.0	-	-	-	Black	\$283.98	2.36	
+ 15212	LT	285/55R20		122/119	S	10	80	3,305	3,000	9.0	8.0-10.0	11.7	32.4	16.0	-	-	-	Black	\$284.98		
+ 17557	LT	285/60R20		125/122	R	10	80	3,640	3,305	8.5	8.0-10.0	11.5	33.5	16.0	-	-	-	Black	\$295.98	1.32	
+ 16279	LT	295/60R20		126/123	S	10	80	3,750	3,415	8.5	8.0-10.0	11.8	33.9	16.0	-	-	-	Black	\$315.98	2.36	
+ 15213	LT	305/55R20		121/118	S	10	65	3,195	2,910	9.5	8.5-11.0	12.4	33.2	16.0	-	-	-	Black	\$311.98		
12753	LT	30X9.50R15		104	S	6	50	1,985	-	7.5	6.5-8.5	9.4	29.5	16.0	-	-	-	White	\$148.98		
12750	LT	31X10.50R15		109	S	6	50	2,270	-	8.5	7.0-9.0	10.6	30.5	16.0	-	-	-	White	\$152.98		
+ 16282	LT	33X12.50R15		108	R	6	35	2,205	-	10.0	8.5-11.0	12.5	32.5	16.0	-	-	-	White	\$168.98		
+ 16373	LT	35X12.50R18		128	S	12	80	3,970	-	10.0	8.5-11.0	12.5	34.5	16.0	-	-	-	Black	\$288.98	4.44	
+ 16374	LT	35X12.50R20		125	S	12	80	3,640	-	10.0	8.5-11.0	12.5	34.5	16.0	-	-	-	Black	\$338.98	1.32	

Technical data can be changed without further notice.
For more detailed OE application information, please refer to "Original Equipment 2021" page.
+ Different sidewall



ROADIAN MTX

MUD TERRAIN

The Roadian MTX features an aggressive design that is extremely versatile for on- and off-road driving. Each tire boasts a dual sidewall design that allows you to customize the look of the tire on your vehicle. The Roadian MTX also features a standard 3-ply design and F-Load weight rating that makes it extremely capable for heavy hauling. With such rugged traits, you wouldn't expect the Roadian MTX to be as quiet as it is on the highway, but thanks to its patented tread block design, the road noise has been minimized.

TOTAL
COVERAGE
WARRANTY
NEXEN TIRE



TREAD WEAR
WARRANTY
N/A



ROAD HAZARD
WARRANTY
N/A



ROADSIDE
ASSISTANCE
36 MONTHS



FREE TRIAL
45 DAYS OR
500 MILES

PATTERN CODE: RO MTX

Product Code	P/LT	Size	XL	LI	SS	PLY	Max Air (psi)	Max Load (lbs)		Rim		Section Width (inch)	Overall Diameter (inch)	Tread Depth (/32")	UTQG			Sidewall	MSRP	F.E.T.
								S	D	Meas.	App.				Tread-wear	Trac.	Temp.			
15873	LT	265/75R16		123/120	Q	10	80	3,415	3,085	7.5	7.0-8.0	10.5	31.9	19.0	-	-	-	Black	\$202.98	
15879	LT	285/75R16		126/123	Q	10	80	3,750	3,415	8.0	7.5-9.0	11.3	33.1	19.0	-	-	-	Black	\$209.98	2.36
15883	LT	235/80R17		120/117	Q	10	80	3,085	2,835	6.5	6.0-7.5	9.3	32.0	18.0	-	-	-	Black	\$208.98	
15884	LT	245/75R17		121/118	Q	10	80	3,195	2,910	7.0	6.5-7.5	9.8	31.7	18.0	-	-	-	Black	\$213.98	
15886	LT	255/75R17		111/108	Q	6	50	2,405	2,205	7.0	6.5-8.5	10.0	32.3	18.0	-	-	-	Black	\$218.98	
15887	LT	265/70R17		121/118	Q	10	80	3,195	2,910	8.0	7.0-8.5	10.7	31.9	19.0	-	-	-	Black	\$218.98	
15713	LT	285/70R17		121/118	Q	10	80	3,195	2,910	8.5	7.5-9.0	11.5	33.0	19.0	-	-	-	Black	\$260.98	
15888	LT	295/70R17		121/118	Q	10	80	3,195	2,910	8.5	7.5-10.0	11.8	33.5	20.0	-	-	-	Black	\$250.98	
16398	LT	305/65R17		121/118	Q	12	80	3,195	2,910	9.0	8.5-11.0	12.2	32.8	20.0	-	-	-	Black	\$258.98	
16399	LT	315/70R17		121/118	Q	12	80	3,195	2,910	9.5	8.0-11.0	12.7	34.6	20.0	-	-	-	Black	\$266.98	
15925	LT	275/65R18		123/120	Q	10	80	3,415	3,085	8.0	7.5-9.0	11.0	32.3	19.0	-	-	-	Black	\$233.98	
15897	LT	275/70R18		125/122	Q	10	80	3,640	3,305	8.0	7.0-8.5	11.0	33.4	19.0	-	-	-	Black	\$250.98	1.32
15926	LT	285/65R18		125/122	Q	10	80	3,640	3,305	8.5	8.0-10.0	11.5	32.8	19.0	-	-	-	Black	\$280.98	1.32
15898	LT	295/70R18		129/126	Q	10	80	4,080	3,750	8.5	7.5-10.0	11.8	34.5	20.0	-	-	-	Black	\$271.98	5.48
16400	LT	305/70R18		128/125	Q	12	80	3,970	3,640	9.0	8.5-10.0	12.2	35.1	20.0	-	-	-	Black	\$284.98	4.44
15929	LT	275/65R20		126/123	Q	10	80	3,750	3,415	8.0	7.5-9.5	11.0	34.3	19.0	-	-	-	Black	\$289.98	2.36
15932	LT	285/55R20		122/119	Q	10	80	3,305	3,000	9.0	8.0-10.0	11.7	32.6	19.0	-	-	-	Black	\$310.98	
15933	LT	295/55R20		123/120	Q	10	80	3,415	3,085	9.5	8.0-10.0	12.2	33.0	20.0	-	-	-	Black	\$307.98	
15931	LT	295/60R20		126/123	Q	10	80	3,750	3,415	8.5	8.0-10.0	11.8	34.2	20.0	-	-	-	Black	\$340.98	2.36
15930	LT	295/65R20		129/126	Q	10	80	4,080	3,750	8.5	8.0-10.0	11.8	35.4	20.0	-	-	-	Black	\$324.98	5.48
16271	LT	305/55R20		125/122	Q	12	80	3,640	3,305	9.5	8.5-11.0	12.4	33.5	20.0	-	-	-	Black	\$325.98	1.32

ROADIAN MTX

... CONTINUED FROM PREVIOUS PAGE

PATTERN CODE: RO MTX

Product Code	P/LT	Size	XL	LI	SS	PLY	Max Air (psi)	Max Load (lbs)		Rim		Section Width (inch)	Overall Diameter (inch)	Tread Depth (/32")	UTQG			Sidewall	MSRP	F.E.T.
								S	D	Meas.	App.				Tread-wear	Trac.	Temp.			
15867	LT	33X12.50R15		108	Q	6	35	2,205	-	10.0	8.5-11.0	12.5	32.8	21.0	-	-	-	Black	\$201.98	
15871	LT	35X12.50R15		113	Q	6	35	2,535	-	10.0	8.5-11.0	12.5	34.8	21.0	-	-	-	Black	\$204.98	
16261	LT	33X12.50R17		121	Q	12	80	3,195	-	10.0	8.5-11.0	12.5	32.8	21.0	-	-	-	Black	\$261.98	
16262	LT	35X12.50R17		121	Q	12	80	3,195	-	10.0	8.5-11.0	12.5	34.8	21.0	-	-	-	Black	\$263.98	
16348	LT	37X12.50R17		121	Q	12	80	3,195	-	10.0	8.5-11.0	12.5	36.8	21.0	-	-	-	Black	\$284.98	
16263	LT	33X12.50R18		122	Q	12	80	3,305	-	10.0	8.5-11.0	12.5	32.8	21.0	-	-	-	Black	\$268.98	
16264	LT	35X12.50R18		128	Q	12	80	3,970	-	10.0	8.5-11.0	12.5	34.8	21.0	-	-	-	Black	\$282.98	4.44
16265	LT	33X12.50R20		119	Q	12	80	3,000	-	10.0	8.5-11.0	12.5	32.8	21.0	-	-	-	Black	\$283.98	
16266	LT	35X12.50R20		125	Q	12	80	3,640	-	10.0	8.5-11.0	12.5	34.8	21.0	-	-	-	Black	\$313.98	1.32
16267	LT	37X12.50R20		128	Q	12	80	3,970	-	10.0	8.5-11.0	12.5	36.8	21.0	-	-	-	Black	\$327.98	4.44
16401	LT	37X13.50R20		128	Q	12	80	3,970	-	11.0	8.5-11.0	13.6	36.8	21.0	-	-	-	Black	\$381.98	4.44
16268	LT	33X12.50R22		114	Q	12	80	2,600	-	10.0	8.5-11.0	12.5	32.8	19.0	-	-	-	Black	\$324.98	
16269	LT	35X12.50R22		121	Q	12	80	3,195	-	10.0	8.5-11.0	12.5	34.8	21.0	-	-	-	Black	\$376.98	
16270	LT	37X13.50R22		128	Q	12	80	3,970	-	11.0	8.5-11.0	13.6	36.8	21.0	-	-	-	Black	\$400.98	4.44

Technical data can be changed without further notice.

DUAL SIDEWALLS

Every Roadian MTX comes with two sidewall designs, so you choose how to mount it.



ROADIAN MT

MUD TERRAIN



The Roadian MT incorporates a zig-zag shoulder block design to provide outstanding traction for off-road and wet conditions, and a deep-groove design, which offers enhanced traction in deep mud and gravel. The shoulder-protector design maximizes load and durability, while optimized wide grooves provide excellent water drainage and anti-hydroplaning performance.

TOTAL
COVERAGE
WARRANTY
NEXEN TIRE

TREAD WEAR
WARRANTY
N/A

ROAD HAZARD
WARRANTY
N/A

ROADSIDE
ASSISTANCE
36 MONTHS

PATTERN CODE: RO MT

Product Code	P/LT	Size	XL	LI	SS	PLY	Max Air (psi)	Max Load (lbs)		Rim		Section Width (inch)	Overall Diameter (inch)	Tread Depth (/32")	UTQG			Sidewall	MSRP
								S	D	Meas.	App.				Tread-wear	Trac.	Temp.		
10667	LT	235/75R15		104/101	Q	6	50	1,985	1,820	6.5	6.0-7.0	9.3	28.9	17.0	-	-	-	White	\$128.98
10658	LT	235/85R16		120/116	Q	10	80	3,042	2,778	6.5	6.0-7.5	9.3	31.7	17.0	-	-	-	White	\$163.98
10674		31X10.50R15		109	Q	6	50	2,270	-	8.5	7.0-9.0	10.6	30.5	18.0	-	-	-	White	\$157.98

Technical data can be changed without further notice.

PERFORMANCE RATINGS

BRAKING
8

COMFORT
6

FUEL EFFICIENCY
6

OFF ROAD
10

WEAR LIFE
6





ROADIAN CT8 HL

COMMERCIAL VAN/LT

The Roadian CT8 HL delivers heavy-duty performance for commercial vehicles, and it is the original equipment tire of Ram ProMaster.

TOTAL
COVERAGE
WARRANTY
NEXEN TIRE

TREAD WEAR
WARRANTY
N/A

ROAD HAZARD
WARRANTY
N/A

ROADSIDE
ASSISTANCE
36 MONTHS

FREE TRIAL
45 DAYS OR
500 MILES

PATTERN CODE: CT8HL

OE FITMENT ON



Product Code	P/LT	Size	XL	LI	SS	PLY	Max Air (psi)	Max Load (lbs)		Rim		Section Width (inch)	Overall Diameter (inch)	Tread Depth (/32")	UTQG			Sidewall	MSRP	F.E.T.	OE
								S	D	Meas.	App.				Tread-wear	Trac.	Temp.				
15237	LT	185/60R15C		94/92	T	6	54	1,477	1,389	5.5	5.5-6.0	7.4	23.7	13.0	-	-	-	Black	\$107.98		
15419	LT	195/75R16C		107/105	R	8	69	2,149	2,039	5.5	5.0-6.0	7.7	27.5	13.0	-	-	-	Black	\$105.98		
15386	LT	225/75R16C		121/120	R	10	83	3,195	3,085	6.0	6.0-7.0	8.8	29.3	15.0	-	-	-	Black	\$140.98		RAM
15241	LT	235/65R16C		121/119	R	10	83	3,197	2,998	7.0	6.5-7.5	9.4	28.0	13.0	-	-	-	Black	\$138.98		
15409	LT	215/85R16		115/112	R	10	80	2,680	2,470	6.0	5.5-7.0	8.5	30.4	15.0	-	-	-	Black	\$133.98		
13427	LT	225/75R16		115/112	R	10	80	2,680	2,470	6.0	6.0-7.0	8.8	29.3	15.0	-	-	-	Black	\$134.98		RAM
15410	LT	235/85R16		120/116	R	10	80	3,042	2,778	6.5	6.0-7.5	9.3	31.7	15.0	-	-	-	Black	\$147.98		
15411	LT	245/75R16		120/116	S	10	80	3,042	2,778	7.0	6.5-7.5	9.8	30.5	15.0	-	-	-	Black	\$134.98		
15412	LT	265/75R16		123/120	R	10	80	3,415	3,085	7.5	7.0-8.0	10.5	31.7	15.0	-	-	-	Black	\$145.98		
15413	LT	235/80R17		120/117	R	10	80	3,085	2,835	6.5	6.0-7.5	9.3	31.8	15.0	-	-	-	Black	\$150.98		
15414	LT	245/70R17		119/116	R	10	80	3,000	2,755	7.0	6.5-8.0	9.8	30.6	15.0	-	-	-	Black	\$149.98		
15415	LT	245/75R17		121/118	S	10	80	3,195	2,910	7.0	6.5-7.5	9.8	31.5	15.0	-	-	-	Black	\$160.98		
15416	LT	265/70R17		121/118	R	10	80	3,195	2,910	8.0	7.0-8.5	10.7	31.7	15.0	-	-	-	Black	\$171.98		
15417	LT	275/65R18		123/120	S	10	80	3,415	3,085	8.0	7.5-9.0	11.0	32.1	15.0	-	-	-	Black	\$185.98		
15418	LT	275/70R18		125/122	R	10	80	3,640	3,305	8.0	7.0-8.5	11.0	33.2	15.0	-	-	-	Black	\$183.98	1.32	

Technical data can be changed without further notice.
For more detailed OE application information, please refer to "Original Equipment 2021" page.

PERFORMANCE RATINGS

BRAKING
7

COMFORT
7

FUEL EFFICIENCY
6

OFF ROAD
7

WEAR LIFE
8



ROADIAN CT8

COMMERCIAL VAN/LT

The Roadian CT8 maintains optimal rigidity balance by including a half-depth transverse groove in the center block. Also, square-shaped dimples in the tread prevent stress, resulting in improved durability and tread life.

TOTAL
COVERAGE
WARRANTY
NEXEN TIRE

TREAD WEAR
WARRANTY
N/A

ROAD HAZARD
WARRANTY
N/A

ROADSIDE
ASSISTANCE
36 MONTHS

PATTERN CODE: CT8

Product Code	P/LT	Size	XL	LI	SS	PLY	Max Air (psi)	Max Load (lbs)		Rim		Section Width (inch)	Overall Diameter (inch)	Tread Depth (/32")	UTQG			Sidewall	MSRP
								S	D	Meas.	App.				Tread-wear	Trac.	Temp.		
14502		185R14C		102/100	T	8	65	1,874	1,764	5.0	5.0-6.0	7.4	25.6	10.5	-	-	-	Black	\$97.98

Technical data can be changed without further notice.

PERFORMANCE RATINGS

BRAKING
7

COMFORT
7

FUEL EFFICIENCY
6

OFF ROAD
7

WEAR LIFE
8



WINGUARD Sport 2

PERFORMANCE STUDLESS WINTER

The Winguard Sport 2 raises winter driving and long-mileage performance to the next level. Its high-density multi-sipe elevates grip for braking on icy and snowy roads, simultaneously increasing longevity. Snowy or dry traction and cornering are improved with the directional tread. Large, wide grooves effectively drain water for anti-hydroplaning performance.

TOTAL
COVERAGE
WARRANTY
NEXEN TIRE

TREAD WEAR
WARRANTY
N/A

ROAD HAZARD
WARRANTY
N/A

ROADSIDE
ASSISTANCE
36 MONTHS

PATTERN CODE: WG SPORT2

Product Code	P/ LT	Size	XL	LI	SS	PLY	Max Air (psi)	Max Load (lbs)		Rim		Section Width (inch)	Overall Diameter (inch)	Tread Depth (/32")	UTQG			Sidewall	MSRP
								S	D	Meas.	Approved				Tread-wear	Trac.	Temp.		
16301		195/65R15		91	H	4	51	1,356		6.0	5.5-7.0	7.9	25.0	10.5				Black	TBA
16302		205/55R16		91	H	4	51	1,356		6.0	5.5-7.5	8.4	24.9	10.5				Black	TBA
16648		215/55R16	XL	97	V	4	50	1,609	-	7.0	6.0-7.5	8.9	25.3	10.5	-	-	-	Black	TBA
15914		215/65R16		98	H	4	51	1,653	-	6.5	6.0-7.5	8.7	27.0	10.5	-	-	-	Black	TBA
17742		225/60R16	XL	102	V	4	50	1,874		6.5	6.0-8.0	9.0	26.6	10.5				Black	TBA
15440		205/40R17	XL	84	V	4	50	1,102	-	7.5	7.0-8.0	8.3	23.5	10.5	-	-	-	Black	TBA
15447		205/45R17	XL	88	V	4	50	1,235	-	7.0	6.5-7.5	8.1	24.3	10.5	-	-	-	Black	TBA
15481		205/50R17	XL	93	V	4	50	1,433	-	6.5	5.5-7.5	8.4	25.1	10.5	-	-	-	Black	TBA
17739		205/55R17	XL	95	V	4	50	1,521		6.5	5.5-7.5	8.4	25.9	10.5				Black	TBA
15441		215/40R17	XL	87	V	4	50	1,201	-	7.5	7.0-8.5	8.6	23.8	10.5	-	-	-	Black	TBA
15448		215/45R17	XL	91	V	4	50	1,356	-	7.0	7.0-8.0	8.4	24.6	10.5	-	-	-	Black	TBA
15482		215/50R17	XL	95	V	4	50	1,521	-	7.0	6.0-7.5	8.9	25.5	10.5	-	-	-	Black	TBA
15487		215/55R17	XL	98	V	4	50	1,653	-	7.0	6.0-7.5	8.9	26.3	10.5	-	-	-	Black	TBA
15903		215/60R17		96	H	4	51	1,565	-	6.5	6.0-7.5	8.7	27.2	10.5	-	-	-	Black	TBA
15450		225/45R17	XL	94	V	4	50	1,477	-	7.5	7.0-8.5	8.9	25.0	10.5	-	-	-	Black	TBA
15483		225/50R17	XL	98	V	4	50	1,653	-	7.0	6.0-8.0	9.2	25.9	10.5	-	-	-	Black	TBA
15488		225/55R17	XL	101	V	4	50	1,819	-	7.0	6.0-8.0	9.2	26.8	10.5	-	-	-	Black	TBA
15905		225/60R17	XL	103	H	4	50	1,929	-	6.5	6.0-8.0	9.0	27.6	10.5	-	-	-	Black	TBA
15917		225/65R17		102	H	4	51	1,874	-	6.5	6.0-8.0	9.0	28.5	10.5	-	-	-	Black	TBA
15476		235/45R17	XL	97	V	4	50	1,609	-	8.0	7.5-9.0	9.3	25.4	10.5	-	-	-	Black	TBA
15490		235/55R17	XL	103	V	4	50	1,929	-	7.5	6.5-8.5	9.6	27.2	10.5	-	-	-	Black	TBA

CONTINUED ON NEXT PAGE ...

PERFORMANCE RATINGS

SNOW TRACTION
7

ICE TRACTION
6

DRY HANDLING
8

WET HANDLING
9

ROLLING RESISTANCE
6

COMFORT
6



WINGUARD Sport 2

... CONTINUED FROM PREVIOUS PAGE

PATTERN CODE: WG SPORT2

Product Code	P/ LT	Size	XL	LI	SS	PLY	Max Air (psi)	Max Load (lbs)		Rim		Section Width (inch)	Overall Diameter (inch)	Tread Depth (/32")	UTQG			Sidewall	MSRP
								S	D	Meas.	Approved				Tread-wear	Trac.	Temp.		
15908		235/60R17	XL	106	H	4	50	2,094	-	7.0	6.5-8.5	9.4	28.1	10.5	-	-	-	Black	TBA
15856		235/65R17	XL	108	V	4	50	2,205	-	7.0	6.5-8.5	9.4	29.1	10.5	-	-	-	Black	TBA
15479		245/45R17	XL	99	V	4	50	1,709	-	8.0	7.5-9.0	9.6	25.7	10.5	-	-	-	Black	TBA
15919		245/65R17		107	H	4	51	2,149	-	7.0	7.0-8.5	9.8	29.5	10.5	-	-	-	Black	TBA
16016		215/40R18	XL	89	V	4	50	1,279	-	7.5	7.0-8.5	8.6	24.8	10.5	-	-	-	Black	TBA
16649		215/45R18	XL	93	W	4	50	1,433	-	7.0	7.0-8.0	8.4	25.6	10.5	-	-	-	Black	TBA
15442		225/40R18	XL	92	V	4	50	1,389	-	8.0	7.5-9.0	9.1	25.1	10.5	-	-	-	Black	TBA
15475		225/45R18	XL	95	V	4	50	1,521	-	7.5	7.0-8.5	8.9	25.9	10.5	-	-	-	Black	TBA
15484		225/50R18	XL	99	H	4	50	1,709	-	7.0	6.0-8.0	9.2	26.9	10.5	-	-	-	Black	TBA
15901		225/55R18	XL	102	V	4	50	1,874	-	7.0	6.0-8.0	9.2	27.8	10.5	-	-	-	Black	TBA
15910		225/60R18	XL	104	V	4	50	1,984	-	6.5	6.0-8.0	9.0	28.6	10.5	-	-	-	Black	TBA
15443		235/40R18	XL	95	W	4	50	1,521	-	8.5	8.0-9.5	9.5	25.4	10.5	-	-	-	Black	TBA
15477		235/45R18	XL	98	V	4	50	1,653	-	8.0	7.5-9.0	9.3	26.3	10.5	-	-	-	Black	TBA
16024		235/50R18	XL	101	V	4	50	1,819	-	7.5	6.5-8.5	9.6	27.3	10.5	-	-	-	Black	TBA
15902		235/55R18	XL	104	H	4	50	1,984	-	7.5	6.5-8.5	9.6	28.1	10.5	-	-	-	Black	TBA
15911		235/60R18	XL	107	H	4	50	2,149	-	7.0	6.5-8.5	9.4	29.1	10.5	-	-	-	Black	TBA
15445		245/40R18	XL	97	W	4	50	1,609	-	8.5	8.0-9.5	9.8	25.7	10.5	-	-	-	Black	TBA
15480		245/45R18	XL	100	V	4	50	1,764	-	8.0	7.5-9.0	9.6	26.7	10.5	-	-	-	Black	TBA
15485		245/50R18	XL	104	V	4	50	1,984	-	7.5	7.0-8.5	10.0	27.7	10.5	-	-	-	Black	TBA
16015		255/35R18	XL	94	V	4	50	1,477	-	9.0	8.5-10.0	10.2	25.0	10.5	-	-	-	Black	TBA
15446		255/40R18	XL	99	V	4	50	1,709	-	9.0	8.5-10.0	10.2	26.0	10.5	-	-	-	Black	TBA
16022		255/45R18	XL	103	V	4	50	1,929	-	8.5	8.0-9.5	10.0	27.0	10.5	-	-	-	Black	TBA
15854		255/55R18	XL	109	V	4	50	2,271	-	8.0	7.0-9.0	10.4	29.0	10.5	-	-	-	Black	TBA
15913		255/60R18	XL	112	H	4	50	2,469	-	7.5	7.0-9.0	10.2	30.0	10.5	-	-	-	Black	TBA
18100		265/60R18	XL	114	H	4	50	2,601		8.0	7.5-9.5	10.7	30.5	10.0				Black	TBA
17730		275/40R18	XL	103	V	4	50	1,929		9.5	9.0-11.0	10.9	26.7	10.5				Black	TBA
17736		275/45R18	XL	107	V	4	50	2,149		9.0	8.5-10.5	10.7	27.8	10.5				Black	TBA
17738		225/40R19	XL	93	V	4	50	1,433		8.0	7.5-9.0	9.1	26.1	10.5				Black	TBA
15438		235/35R19	XL	91	W	4	50	1,356	-	8.5	8.0-9.5	9.5	25.5	10.5	-	-	-	Black	TBA
15478		235/45R19	XL	99	V	4	50	1,709	-	8.0	7.5-9.0	9.3	27.4	10.5	-	-	-	Black	TBA
16025		235/55R19	XL	105	V	4	50	2,039	-	7.5	6.5-8.5	9.6	29.2	10.5	-	-	-	Black	TBA
17588		245/35R19	XL	93	W	4	50	1,433		8.5	8.0-9.5	9.8	25.8	10.0				Black	TBA
16018		245/40R19	XL	98	V	4	50	1,653	-	8.5	8.0-9.5	9.8	26.7	10.5	-	-	-	Black	TBA
16023		245/45R19	XL	102	V	4	50	1,874	-	8.0	7.5-9.0	9.6	27.7	10.5	-	-	-	Black	TBA
15439		255/35R19	XL	96	V	4	50	1,565	-	9.0	8.5-10.0	10.2	26.0	10.5	-	-	-	Black	TBA
16019		255/40R19	XL	100	V	4	50	1,764	-	9.0	8.5-10.0	10.2	27.0	10.5	-	-	-	Black	TBA
17735		255/45R19	XL	104	V	4	50	1,984		8.5	8.0-9.5	10.0	28.1	10.5				Black	TBA
15900		255/50R19	XL	107	V	4	50	2,149	-	8.0	7.0-9.0	10.4	29.1	10.5	-	-	-	Black	TBA
17592		265/35R19	XL	98	W	4	50	1,653		9.5	9.0-10.5	10.7	26.3	10.0				Black	TBA
16650		275/35R19	XL	100	W	4	50	1,764	-	9.5	9.0-11.0	10.9	26.6	10.5	-	-	-	Black	TBA
16020		275/40R19	XL	105	V	4	50	2,039	-	9.5	9.0-11.0	10.9	27.7	10.5	-	-	-	Black	TBA
18067		245/40R20	XL	99	W	4	50	1,709		8.5	8.0-9.5	9.8	27.7	10.5				Black	TBA
17737		245/45R20	XL	103	V	4	50	1,929		8.0	7.5-9.0	9.6	28.7	10.5				Black	TBA
18103		245/50R20		102	V	4	51	1,874		7.5	7.0-8.5	10.0	29.7	10.0				Black	TBA
18102		255/50R20	XL	109	V	4	50	2,271		8.0	7.0-9.0	10.4	30.1	10.0				Black	TBA
17733		265/35R20	XL	99	V	4	50	1,709		9.5	9.0-10.5	10.7	27.3	10.0				Black	TBA
17593		275/35R20	XL	102	W	4	50	1,874		9.5	9.0-11.0	10.9	27.6	10.0				Black	TBA
16021		275/40R20	XL	106	W	4	50	2,094	-	9.5	9.0-11.0	10.9	28.7	10.5	-	-	-	Black	TBA
18104		275/45R20	XL	110	V	4	50	2,337		9.0	8.5-10.5	10.7	29.8	10.0				Black	TBA



WINGUARD ice Plus

STUDLESS NORDIC WINTER

The Winguard Ice Plus has a dual V-shape that enhances grip and braking. There are four grooves and two small semi grooves that drain snow, slush and water. The Winguard Ice Plus’ shoulder stiffness enhances durability and its 3D block prevents abnormal wear.

TOTAL
COVERAGE
WARRANTY
NEXEN TIRE

TREAD WEAR
WARRANTY
N/A

ROAD HAZARD
WARRANTY
N/A

ROADSIDE
ASSISTANCE
36 MONTHS

PATTERN CODE: WG ICE PLUS


Product Code	P/ LT	Size	XL	LI	SS	PLY	Max Air (psi)	Max Load (lbs)		Rim		Section Width (inch)	Overall Diameter (inch)	Tread Depth (/32")	UTQG			Sidewall	MSRP	
								S	D	Meas.	Approved				Tread-wear	Trac.	Temp.			
16149		175/70R13			82	T	4	51	1,047	-	5.0	4.5-6.0	7.0	22.7	11.0	-	-	-	Black	TBA
16145		175/65R14	XL	86	T	4	50	1,168	-	5.0	5.0-6.0	7.0	23.0	11.0	-	-	-	Black	TBA	
16150		175/70R14	XL	88	T	4	50	1,235	-	5.0	4.5-6.0	7.0	23.7	11.0	-	-	-	Black	TBA	
16138		185/60R14	XL	86	T	4	50	1,168	-	5.5	5.0-6.5	7.4	22.8	11.0	-	-	-	Black	TBA	
16146		185/65R14	XL	90	T	4	50	1,323	-	5.5	5.0-6.5	7.4	23.5	11.0	-	-	-	Black	TBA	
16151		185/70R14	XL	92	T	4	50	1,389	-	5.5	4.5-6.0	7.4	24.3	11.0	-	-	-	Black	TBA	
16152		195/70R14		91	T	4	51	1,356	-	6.0	5.0-6.5	7.9	24.8	11.0	-	-	-	Black	TBA	
16130		185/55R15	XL	86	T	4	50	1,168	-	6.0	5.0-6.5	7.6	23.0	11.0	-	-	-	Black	TBA	
16139		185/60R15	XL	88	T	4	50	1,235	-	5.5	5.0-6.5	7.4	23.7	11.0	-	-	-	Black	TBA	
16147		185/65R15	XL	92	T	4	50	1,389	-	5.5	5.0-6.5	7.4	24.4	11.0	-	-	-	Black	TBA	
16126		195/50R15		82	T	4	51	1,047	-	6.0	5.5-7.0	7.9	22.7	11.0	-	-	-	Black	TBA	
16131		195/55R15	XL	89	T	4	50	1,279	-	6.0	5.5-7.0	7.9	23.4	11.0	-	-	-	Black	TBA	
16140		195/60R15	XL	92	T	4	50	1,389	-	6.0	5.5-7.0	7.9	24.2	11.0	-	-	-	Black	TBA	
16027		195/65R15	XL	95	T	4	50	1,521	-	6.0	5.5-7.0	7.9	25.0	11.0	-	-	-	Black	TBA	
16148		205/65R15	XL	99	T	4	50	1,709	-	6.0	5.5-7.5	8.2	25.5	11.0	-	-	-	Black	TBA	
16153		205/70R15	XL	100	T	4	50	1,764	-	6.0	5.5-7.0	8.2	26.3	11.0	-	-	-	Black	TBA	
16132		195/55R16	XL	91	T	4	50	1,356	-	6.0	5.5-7.0	7.9	24.4	11.0	-	-	-	Black	TBA	
16028		205/55R16		91	T	4	51	1,356	-	6.5	5.5-7.5	8.4	24.9	11.0	-	-	-	Black	TBA	
16141		205/60R16	XL	96	T	4	50	1,565	-	6.0	5.5-7.5	8.2	25.7	11.0	-	-	-	Black	TBA	
16133		215/55R16	XL	97	T	4	50	1,609	-	7.0	6.0-7.5	8.9	25.3	11.0	-	-	-	Black	TBA	
16142		215/60R16	XL	99	T	4	50	1,709	-	6.5	6.0-7.5	8.7	26.1	11.0	-	-	-	Black	TBA	
16135		225/55R16	XL	99	T	4	50	1,709	-	7.0	6.0-8.0	9.2	25.7	11.0	-	-	-	Black	TBA	
16144		235/60R16	XL	104	T	4	50	1,984	-	7.0	6.5-8.5	9.4	27.1	11.0	-	-	-	Black	TBA	

CONTINUED ON NEXT PAGE ...

PERFORMANCE RATINGS



SNOW TRACTION
8




ICE TRACTION
8




DRY HANDLING
6



WET HANDLING
6



ROLLING RESISTANCE
6



COMFORT
8

WINGUARD ice Plus

... CONTINUED FROM PREVIOUS PAGE

PATTERN CODE: WG ICE PLUS

Product Code	P/ LT	Size	XL	LI	SS	PLY	Max Air (psi)	Max Load (lbs)		Rim		Section Width (inch)	Overall Diameter (inch)	Tread Depth (/32")	UTQG			Sidewall	MSRP
								S	D	Meas.	Approved				Tread-wear	Trac.	Temp.		
16127		205/50R17	XL	93	T	4	50	1,433	-	6.5	5.5-7.5	8.4	25.1	11.0	-	-	-	Black	TBA
16119		215/45R17	XL	91	T	4	50	1,356	-	7.0	7.0-8.0	8.4	24.6	11.0	-	-	-	Black	TBA
16128		215/50R17	XL	95	T	4	50	1,521	-	7.0	6.0-7.5	8.9	25.5	11.0	-	-	-	Black	TBA
16134		215/55R17	XL	98	T	4	50	1,653	-	7.0	6.0-7.5	8.9	26.3	11.0	-	-	-	Black	TBA
16143		215/60R17		96	T	4	51	1,565	-	6.5	6.0-7.5	8.7	27.2	11.0	-	-	-	Black	TBA
16120		225/45R17	XL	94	T	4	50	1,477	-	7.5	7.0-8.5	8.9	25.0	11.0	-	-	-	Black	TBA
16129		225/50R17	XL	98	T	4	50	1,653	-	7.0	6.0-8.0	9.2	25.9	11.0	-	-	-	Black	TBA
16136		225/55R17	XL	101	T	4	50	1,819	-	7.0	6.0-8.0	9.2	26.8	11.0	-	-	-	Black	TBA
16122		235/45R17	XL	97	T	4	50	1,609	-	8.0	7.5-9.0	9.3	25.4	11.0	-	-	-	Black	TBA
16137		235/55R17		99	T	4	51	1,709	-	7.5	6.5-8.5	9.6	27.2	11.0	-	-	-	Black	TBA
16123		245/45R17	XL	99	T	4	50	1,709	-	8.0	7.5-9.0	9.6	25.7	11.0	-	-	-	Black	TBA
16116		225/40R18	XL	92	T	4	50	1,389	-	8.0	7.5-9.0	9.1	25.1	11.0	-	-	-	Black	TBA
16121		225/45R18	XL	95	T	4	50	1,521	-	7.5	7.0-8.5	8.9	25.9	11.0	-	-	-	Black	TBA
16117		235/40R18	XL	95	T	4	50	1,521	-	8.5	8.0-9.5	9.5	25.4	11.0	-	-	-	Black	TBA
16118		245/40R18	XL	97	T	4	50	1,609	-	8.5	8.0-9.5	9.8	25.7	11.0	-	-	-	Black	TBA
16124		245/45R18	XL	100	T	4	50	1,764	-	8.0	7.5-9.0	9.6	26.7	11.0	-	-	-	Black	TBA
16125		245/45R19	XL	102	T	4	50	1,874	-	8.0	7.5-9.0	9.6	27.7	11.0	-	-	-	Black	TBA

Technical data can be changed without further notice.
TBA — To Be Announced to selected dealers.



WINGUARD ice SUV

STUDLESS NORDIC WINTER

The Winguard Ice SUV has a dual V-shape that enhances grip and braking. There are four grooves and two small semi-grooves that drain snow, slush and water. The Winguard Ice SUV’s shoulder stiffness enhances durability and its 3D block prevents abnormal wear.

TOTAL
COVERAGE
WARRANTY

TREAD WEAR
WARRANTY
N/A

ROAD HAZARD
WARRANTY
N/A

ROADSIDE
ASSISTANCE
36 MONTHS

PATTERN CODE: WG ICE SUV

Product Code	P/ LT	Size	XL	LI	SS	PLY	Max Air (psi)	Max Load (lbs)		Rim		Section Width (inch)	Overall Diameter (inch)	Tread Depth (/32")	UTQG			Sidewall	MSRP
								S	D	Meas.	Approved				Tread-wear	Trac.	Temp.		
13303		215/65R16		98	Q	4	51	1,653	-	6.5	6.0-7.5	8.7	27.0	11.5	-	-	-	Black	TBA
13304		215/70R16		100	Q	4	51	1,764	-	6.5	5.5-7.0	8.7	27.9	11.5	-	-	-	Black	TBA
13929		225/70R16		103	Q	4	51	1,929	-	6.5	6.0-7.5	9.0	28.4	11.5	-	-	-	Black	TBA
13944		245/70R16		107	Q	4	51	2,149	-	7.0	6.5-8.0	9.8	29.5	11.5	-	-	-	Black	TBA
13302		265/70R16		112	Q	4	51	2,469	-	8.0	7.0-9.0	10.7	30.6	11.5	-	-	-	Black	TBA
13936		225/60R17	XL	103	Q	4	50	1,929	-	6.5	6.0-8.0	9.0	27.6	11.5	-	-	-	Black	TBA
13301		225/65R17		102	Q	4	51	1,874	-	6.5	6.0-8.0	9.0	28.5	11.5	-	-	-	Black	TBA
13305		235/65R17	XL	108	Q	4	50	2,205	-	7.0	6.5-8.5	9.4	29.1	11.5	-	-	-	Black	TBA
13946		265/65R17		112	Q	4	51	2,469	-	8.0	7.5-9.5	10.7	30.6	11.5	-	-	-	Black	TBA
13930		235/55R18		100	Q	4	51	1,764	-	7.5	6.5-8.5	9.6	28.1	11.5	-	-	-	Black	TBA
13931		235/60R18		103	Q	4	51	1,929	-	7.0	6.5-8.5	9.4	29.1	11.5	-	-	-	Black	TBA
13945		265/60R18		110	Q	4	51	2,337	-	8.0	7.5-9.5	10.7	30.5	11.5	-	-	-	Black	TBA
13947		285/60R18		116	Q	4	51	2,756	-	8.5	8.0-10.0	11.5	31.5	11.5	-	-	-	Black	TBA
16345		255/50R19	XL	107	T	4	50	2,149	-	8.0	7.0-9.0	10.4	29.1	11.5	-	-	-	Black	TBA
16346		265/50R20	XL	111	T	4	50	2,403	-	8.5	7.5-9.5	10.9	30.5	11.5	-	-	-	Black	TBA
16347		285/50R20	XL	116	T	4	50	2,756	-	9.0	8.0-10.0	11.7	31.3	11.5	-	-	-	Black	TBA

Technical data can be changed without further notice.
TBA — To Be Announced to selected dealers.

PERFORMANCE RATINGS

SNOW TRACTION
8

ICE TRACTION
8

DRY HANDLING
6

WET HANDLING
6

ROLLING RESISTANCE
6

COMFORT
8



WINGUARD winSPIKE WH62

STUDDABLE WINTER

Winguard Winspike WH62 tires are molded to allow for stud installation that provides better traction on ice and snow. Sipe and block rigidity maximize handling in combination with the V-shaped tread pattern. The Winspike WH62 provides increased ice and snow traction and a more comfortable ride over the standard Winguard Winspike pattern.

TOTAL
COVERAGE
WARRANTY

TREAD WEAR
WARRANTY
N/A

ROAD HAZARD
WARRANTY
N/A

ROADSIDE
ASSISTANCE
36 MONTHS

PATTERN CODE: WH62

Product Code	P/ LT	Size	XL	LI	SS	PLY	Max Air (psi)	Max Load (lbs)		Rim		Section Width (inch)	Overall Diameter (inch)	Tread Depth (/32")	UTQG			Sidewall	MSRP
								S	D	Meas.	Approved				Tread-wear	Trac.	Temp.		
14229		175/70R13		82	T	4	51	1,047	-	5.0	4.5-6.0	7.0	22.7	12.0	-	-	-	Black	TBA
14147		175/65R14	XL	86	T	4	50	1,168	-	5.0	5.0-6.0	7.0	23.0	12.0	-	-	-	Black	TBA
14230		175/70R14		84	T	4	51	1,102	-	5.0	4.5-6.0	7.0	23.7	12.0	-	-	-	Black	TBA
14220		185/60R14		82	T	4	51	1,047	-	5.5	5.0-6.5	7.4	22.8	12.0	-	-	-	Black	TBA
14148		185/65R14	XL	90	T	4	50	1,323	-	5.5	5.0-6.5	7.4	23.5	12.0	-	-	-	Black	TBA
14231		185/70R14	XL	92	T	4	50	1,389	-	5.5	4.5-6.0	7.4	24.3	12.0	-	-	-	Black	TBA
14232		195/70R14		91	T	4	51	1,356	-	6.0	5.0-6.5	7.9	24.8	12.0	-	-	-	Black	TBA
14213		185/55R15	XL	86	T	4	50	1,168	-	6.0	5.0-6.5	7.6	23.0	12.0	-	-	-	Black	TBA
14221		185/60R15	XL	88	T	4	50	1,235	-	5.5	5.0-6.5	7.4	23.7	12.0	-	-	-	Black	TBA
14150		185/65R15	XL	92	T	4	50	1,389	-	5.5	5.0-6.5	7.4	24.4	12.0	-	-	-	Black	TBA
14214		195/55R15	XL	89	T	4	50	1,279	-	6.0	5.5-7.0	7.9	23.4	12.0	-	-	-	Black	TBA
14222		195/60R15	XL	92	T	4	50	1,389	-	6.0	5.5-7.0	7.9	24.2	12.0	-	-	-	Black	TBA
14151		195/65R15	XL	95	T	4	50	1,521	-	6.0	5.5-7.0	7.9	25.0	12.0	-	-	-	Black	TBA
14227		205/65R15	XL	99	T	4	50	1,709	-	6.0	5.5-7.5	8.2	25.5	12.0	-	-	-	Black	TBA
14233		205/70R15		96	T	4	51	1,565	-	6.0	5.0-7.0	8.2	26.3	12.0	-	-	-	Black	TBA
14234		215/70R15		98	T	4	51	1,653	-	6.5	5.5-7.0	8.7	26.9	12.0	-	-	-	Black	TBA
15049		195/55R16		87	T	4	51	1,201	-	6.0	5.5-7.0	7.9	24.4	12.0	-	-	-	Black	TBA
14223		195/60R16		89	T	4	51	1,279	-	6.0	5.5-7.0	7.9	25.2	12.0	-	-	-	Black	TBA
14215		205/55R16	XL	94	T	4	50	1,477	-	6.5	5.5-7.5	8.4	24.9	12.0	-	-	-	Black	TBA
14149		205/60R16		92	T	4	51	1,389	-	6.0	5.5-7.5	8.2	25.7	12.0	-	-	-	Black	TBA
14216		215/55R16	XL	97	T	4	50	1,609	-	7.0	6.0-7.5	8.9	25.3	12.0	-	-	-	Black	TBA

CONTINUED ON NEXT PAGE ...

PERFORMANCE RATINGS

SNOW TRACTION
9

ICE TRACTION
9

DRY HANDLING
7

WET HANDLING
7

ROLLING RESISTANCE
6

COMFORT
7



... CONTINUED FROM PREVIOUS PAGE

PATTERN CODE: WH62

Product Code	P/ LT	Size	XL	LI	SS	PLY	Max Air (psi)	Max Load (lbs)		Rim		Section Width (inch)	Overall Diameter (inch)	Tread Depth (/32")	UTQG			Sidewall	MSRP
								S	D	Meas.	Approved				Tread-wear	Trac.	Temp.		
14224		215/60R16	XL	99	T	4	50	1,709	-	6.5	6.0-7.5	8.7	26.1	12.0	-	-	-	Black	TBA
14228		215/65R16	XL	102	T	4	50	1,874	-	6.5	6.0-7.5	8.7	27.0	12.0	-	-	-	Black	TBA
16259		225/55R16	XL	99	T	4	50	1,709	-	7.0	6.0-8.0	9.2	25.7	12.0	-	-	-	Black	TBA
14226		225/60R16	XL	102	T	4	50	1,874	-	6.5	6.0-8.0	9.0	26.6	12.0	-	-	-	Black	TBA
15048		205/50R17	XL	93	T	4	50	1,433	-	6.5	5.5-7.5	8.4	25.1	12.0	-	-	-	Black	TBA
16671		215/50R17	XL	95	T	4	50	1,521	-	7.0	6.0-7.5	8.9	25.5	12.0	-	-	-	Black	TBA
14217		215/55R17	XL	98	T	4	50	1,653	-	7.0	6.0-7.5	8.9	26.3	12.0	-	-	-	Black	TBA
14225		215/60R17	XL	100	T	4	50	1,764	-	6.5	6.0-7.5	8.7	27.2	12.0	-	-	-	Black	TBA
14210		225/45R17		91	T	4	51	1,356	-	7.5	7.0-8.5	8.9	25.0	12.0	-	-	-	Black	TBA
14212		225/50R17	XL	98	T	4	50	1,653	-	7.0	6.0-8.0	9.2	25.9	12.0	-	-	-	Black	TBA
14218		225/55R17	XL	101	T	4	50	1,819	-	7.0	6.0-8.0	9.2	26.8	12.0	-	-	-	Black	TBA
16253		235/45R17	XL	97	T	4	50	1,609	-	8.0	7.5-9.0	9.3	25.4	12.0	-	-	-	Black	TBA
14219		235/55R17	XL	103	T	4	50	1,929	-	7.5	6.5-8.5	9.6	27.2	12.0	-	-	-	Black	TBA
16254		245/45R17	XL	99	T	4	50	1,709	-	8.0	7.5-9.0	9.6	25.7	12.0	-	-	-	Black	TBA
16249		225/40R18	XL	92	T	4	50	1,389	-	8.0	7.5-9.0	9.1	25.1	12.0	-	-	-	Black	TBA
16252		225/45R18	XL	95	T	4	50	1,521	-	7.5	7.0-8.5	8.9	25.9	12.0	-	-	-	Black	TBA
16250		235/40R18	XL	95	T	4	50	1,521	-	8.5	8.0-9.5	9.5	25.4	12.0	-	-	-	Black	TBA
16257		235/50R18	XL	101	T	4	50	1,819	-	7.5	6.5-8.5	9.6	27.3	12.0	-	-	-	Black	TBA
16251		245/40R18	XL	97	T	4	50	1,609	-	8.5	8.0-9.5	9.8	25.7	12.0	-	-	-	Black	TBA
16255		245/45R18	XL	100	T	4	50	1,764	-	8.0	7.5-9.0	9.6	26.7	12.0	-	-	-	Black	TBA
16258		245/50R18	XL	104	T	4	50	1,984	-	7.5	7.0-8.5	10.0	27.7	12.0	-	-	-	Black	TBA
16256		255/45R18	XL	103	T	4	50	1,929	-	8.5	8.0-9.5	10.0	27.0	12.0	-	-	-	Black	TBA

Technical data can be changed without further notice.
T.S.M.I. #12
TBA — To Be Announced to selected dealers.



CUV/SUV STUDDABLE WINTER

Winguard Winspike WS62 tires are molded to allow for stud installation that provides better traction on ice and snow. Sipe and block rigidity maximize handling in combination with the V-shaped tread pattern. The Winspike WS62 provides increased ice and snow traction and a more comfortable ride over the standard Winguard Winspike pattern.

TOTAL
COVERAGE
WARRANTY
NEXEN TIRE

TREAD WEAR
WARRANTY
N/A

ROAD HAZARD
WARRANTY
N/A

ROADSIDE
ASSISTANCE
36 MONTHS

PATTERN CODE: WS62

Product Code	P/ LT	Size	XL	LI	SS	PLY	Max Air (psi)	Max Load (lbs)		Rim		Section Width (inch)	Overall Diameter (inch)	Tread Depth (/32")	UTQG			Sidewall	MSRP
								S	D	Meas.	Approved				Tread-wear	Trac.	Temp.		
16647		235/75R15	XL	109	T	4	50	2,271	-	6.5	6.0-8.0	9.3	28.9	12.5	-	-	-	Black	TBA
14245		215/70R16		100	T	4	51	1,764	-	6.5	5.5-7.0	8.7	27.9	12.5	-	-	-	Black	TBA
14254		225/70R16	XL	107	T	4	50	2,149	-	6.5	6.0-7.5	9.0	28.4	12.5	-	-	-	Black	TBA
14237		235/60R16		100	T	4	51	1,764	-	7.0	6.5-8.5	9.4	27.1	12.5	-	-	-	Black	TBA
16645		235/70R16		106	T	4	51	2,094	-	7.0	6.0-8.0	9.4	29.0	12.5	-	-	-	Black	TBA
14246		245/70R16		107	T	4	51	2,149	-	7.0	6.5-8.0	9.8	29.5	12.5	-	-	-	Black	TBA
16646		265/70R16		112	T	4	51	2,469	-	8.0	7.0-9.0	10.7	30.6	12.5	-	-	-	Black	TBA
17438		215/65R17	XL	103	T	4	50	1,929	-	6.5	6.0-7.5	8.7	28.0	12.5	-	-	-	Black	TBA
15047		225/60R17	XL	103	T	4	50	1,929	-	6.5	6.0-8.0	9.0	27.6	12.5	-	-	-	Black	TBA
14241		225/65R17	XL	106	T	4	50	2,094	-	6.5	6.0-8.0	9.0	28.5	12.5	-	-	-	Black	TBA
16276		235/60R17		102	T	4	51	1,874	-	7.0	6.5-8.5	9.4	28.1	12.5	-	-	-	Black	TBA
14242		235/65R17	XL	108	T	4	50	2,205	-	7.0	6.5-8.5	9.4	29.1	12.5	-	-	-	Black	TBA
14243		245/65R17		107	T	4	51	2,149	-	7.0	7.0-8.5	9.8	29.5	12.5	-	-	-	Black	TBA
14244		265/65R17	XL	116	T	4	50	2,756	-	8.0	7.5-9.5	10.7	30.6	12.5	-	-	-	Black	TBA
14247		265/70R17		115	T	4	51	2,679	-	8.0	7.0-9.0	10.7	31.7	12.5	-	-	-	Black	TBA
15046		225/55R18		98	T	4	51	1,653	-	7.0	6.0-8.0	9.2	27.8	12.5	-	-	-	Black	TBA
14236		225/60R18		100	T	4	51	1,764	-	6.5	6.0-8.0	9.0	28.6	12.5	-	-	-	Black	TBA
14235		235/55R18		100	T	4	51	1,764	-	7.5	6.5-8.5	9.6	28.1	12.5	-	-	-	Black	TBA
14238		235/60R18	XL	107	T	4	50	2,149	-	7.0	6.5-8.5	9.4	29.1	12.5	-	-	-	Black	TBA
16644		245/60R18		105	T	4	51	2,039	-	7.0	7.0-8.5	9.8	29.6	12.5	-	-	-	Black	TBA
16274		235/55R19	XL	105	T	4	50	2,039	-	7.5	6.5-8.5	9.6	29.2	12.5	-	-	-	Black	TBA
16272		255/50R19	XL	107	T	4	50	2,149	-	8.0	7.0-9.0	10.4	29.1	12.5	-	-	-	Black	TBA
16275		255/55R19	XL	111	T	4	50	2,403	-	8.0	7.0-9.0	10.4	30.0	12.5	-	-	-	Black	TBA
16273		265/50R20	XL	111	T	4	50	2,403	-	8.5	7.5-9.5	10.9	30.5	12.5	-	-	-	Black	TBA

Technical data can be changed without further notice. | T.S.M.I. #12

TBA — To Be Announced to selected dealers.

PERFORMANCE RATINGS

SNOW TRACTION
9

ICE TRACTION
9

DRY HANDLING
7

WET HANDLING
7

ROLLING RESISTANCE
6

COMFORT
7



WINGUARD winSpike

STUDDABLE WINTER

Winguard Winspike tires are molded for installing studs that dig into snow or ice for better traction. The optimized arrangement of sipes and block rigidity maximizes handling and traction on ice in combination with the V-shaped tread pattern. Noise is addressed by the calculated placement of 12 multi-random stud lines.

TOTAL
COVERAGE
WARRANTY
NEXEN TIRE


TREAD WEAR
WARRANTY
N/A


ROAD HAZARD
WARRANTY
N/A


ROADSIDE
ASSISTANCE
36 MONTHS

PATTERN CODE: WG WINSPIKE

Product Code	P/ LT	Size	XL	LI	SS	PLY	Max Air (psi)	Max Load (lbs)		Rim		Section Width (inch)	Overall Diameter (inch)	Tread Depth (/32")	UTQG			Sidewall	MSRP
								S	D	Meas.	Approved				Tread-wear	Trac.	Temp.		
12805	LT	235/75R15		110/107	Q	8	65	2,335	2,150	6.5	6.0-7.0	9.3	28.9	16.0	-	-	-	Black	TBA
12804	LT	225/75R16		115/112	Q	10	80	2,680	2,470	6.0	6.0-7.0	8.8	29.3	16.0	-	-	-	Black	TBA
12808	LT	235/85R16		120/116	Q	10	80	3,042	2,778	6.5	6.0-7.5	9.3	31.7	16.0	-	-	-	Black	TBA
12806	LT	245/75R16		120/116	Q	10	80	3,042	2,778	7.0	6.5-7.5	9.8	30.5	16.0	-	-	-	Black	TBA
12807	LT	265/75R16		123/120	Q	10	80	3,415	3,085	7.5	7.0-8.0	10.5	31.7	16.0	-	-	-	Black	TBA
12802	LT	245/70R17		119/116	Q	10	80	3,000	2,755	7.0	6.5-8.0	9.8	30.6	16.0	-	-	-	Black	TBA
14045	LT	245/75R17		121/118	Q	10	80	3,195	2,910	7.0	6.5-7.5	9.8	31.5	16.0	-	-	-	Black	TBA
14039	LT	265/65R17		120/117	Q	10	80	3,085	2,835	8.0	7.5-9.5	10.7	30.6	16.0	-	-	-	Black	TBA
12803	LT	265/70R17		121/118	Q	10	80	3,195	2,910	8.0	7.0-8.5	10.7	31.7	16.0	-	-	-	Black	TBA
14048	LT	31X10.50R15		109	Q	6	50	2,270	-	8.5	7.0-9.0	10.6	30.5	16.0	-	-	-	Black	TBA
14040	LT	195/70R15C		104/102	R	8	65	1,984	1,874	6.0	5.0-6.0	7.9	25.8	12.5	-	-	-	Black	TBA
14041	LT	225/70R15C		112/110	R	8	65	2,469	2,337	6.5	6.0-7.0	9.0	27.4	12.5	-	-	-	Black	TBA
14043	LT	195/75R16C		107/105	R	8	69	2,149	2,039	5.5	5.0-6.0	7.7	27.5	12.5	-	-	-	Black	TBA
16386	LT	235/65R16C		121/119	R	10	83	3,197	2,998	7.0	6.5-7.5	9.4	28.0	12.5	-	-	-	Black	TBA

Technical data can be changed without further notice.
T.S.M.I. #15
TBA — To Be Announced to selected dealers.



EURO WIN

STUDLESS WINTER

The EuroWin is Nexen’s Light Truck/SUV Studless Ice & Snow tire developed for the Nissan NV200 and Chevy City Express to transport heavy loads.

TOTAL
COVERAGE
WARRANTY
NEXEN TIRE


TREAD WEAR
WARRANTY
N/A


ROAD HAZARD
WARRANTY
N/A


ROADSIDE
ASSISTANCE
36 MONTHS

PATTERN CODE: EUROWIN

Product Code	P/ LT	Size	XL	LI	SS	PLY	Max Air (psi)	Max Load (lbs)		Rim		Section Width (inch)	Overall Diameter (inch)	Tread Depth (/32")	UTQG			Sidewall	MSRP
								S	D	Meas.	Approved				Tread-wear	Trac.	Temp.		
10873		185/60R15C		94/92	T	6	54	1,477	1,389	5.5	5.5-6.0	7.4	23.7	10.5	-	-	-	Black	TBA

Technical data can be changed without further notice.
TBA — To Be Announced to selected dealers.

PERFORMANCE RATINGS


SNOW TRACTION
8


ICE TRACTION
8




DRY HANDLING
7


WET HANDLING
7


ROLLING
RESISTANCE
6


COMFORT
6

Original Equipment 2021

Brand	Model	Model Year	Product	Product Code		Size	LI/SS		UTQG Wear	Price	F.E.T.
	All New 200	2015-2017	CP671	12909		215/55R17	94	H	400 A A	\$111.98	
				12910		235/45R18	94	H	400 A A	\$137.98	
				16312		235/40R19	96	H	400 A A	\$158.98	
	Pacifica	2017-2021	N'PRIZ RH7@	14376		235/60R18	103	H	680 A A	\$132.98	
	Challenger RT Scat Pack 1320	2020-2021	N'FERA SUR4G	17387		275/40R20	102	Y	100 AA A	\$324.98	
	Journey	2019-2020	N'PRIZ RH7	16489		225/65R17	102	H	540 A A	\$140.98	
				16490		225/55R19	99	H	440 A A	\$187.98	
	Durango	2019-2021	N'PRIZ RH7@	* 16469	P	245/65R18	110	H	500 A A	\$219.98	
	500L	2014-2020	CP671	12525		205/55R16	91	H	400 A A	\$107.98	
				12526		225/45R17	91	V	400 A A	\$113.98	
	500X	2014-2019	CP671	13536		215/55R17	94	V	400 A A	\$111.98	
				13535		215/60R17	96	T	400 A A	\$108.98	
	Elantra	2013-2016	CP671 H	12540	P	205/55R16	89	H	400 A A	\$107.98	
		2017-2020	N'PRIZ AH8	14386		195/65R15	91	T	500 A A	\$85.98	
				14194		205/55R16	91	H	560 A A	\$101.98	
		2012-2017	CP671 H	12842	P	215/45R17	87	H	400 A A	\$103.98	
	Kona	2018-2021	N'PRIZ AH8	14198		225/45R17	91	W	500 A A	\$112.98	
				15605		205/60R16	92	H	500 A A	\$101.98	
				15606		215/55R17	94	V	500 A A	\$112.98	
	Kona EV	2019-2021	N'PRIZ AH8	16383		215/55R17	94	V	500 A A	\$112.98	
	Tucson	2022	Roadian GTX	16581		235/65R17	104	H	600 A A	\$132.98	
	Veloster	2012-2017	CP671 H	12842	P	215/45R17	87	H	400 A A	\$103.98	
		2018-2021	N'PRIZ AH8	14749		215/45R17	87	H	500 A A	\$112.98	
				14708		225/40R18	88	W	500 A A	\$122.98	
	Venue	2020-2021	N'PRIZ AH8	16094		205/55R17	91	H	500 A A	\$121.98	
	Grand Cherokee	2019-2021	N'PRIZ RH7@	* 16469	P	245/65R18	110	H	500 A A	\$219.98	
	Forte	2014-2016	CP671	12841	P	195/65R15	89	T	440 A A	\$83.98	
		2017-2019	N'PRIZ AH8	13466		195/65R15	91	T	500 A A	\$85.98	
		2017-2020	N'PRIZ AH8	14194		205/55R16	91	H	560 A A	\$101.98	
		2014-2018	CP671 H	12842	P	215/45R17	87	H	400 A A	\$103.98	
			CP671	16960	P	225/40R18	88	V	400 A A	\$127.98	
	Optima	2011-2014	CP671	11449	P	205/65R16	94	H	400 A A	\$104.98	
		2016-2020	N'PRIZ AH8	13904		205/65R16	95	H	440 A A	\$104.98	
		2011-2015	CP671	12259	P	215/55R17	93	V	400 A A	\$111.98	
		2013-2015	CP662	12261		225/45R18	95	V	440 A A	\$130.98	

Technical data can be changed without further notice.
* Spare Tire

... CONTINUED FROM PREVIOUS PAGE

NEW

NEW

NEW

Brand	Model	Model Year	Product	Product Code	Size	LI/SS	UTQG Wear	Price	F.E.T.		
	Carnival	2022	Roadian GTX	17136		235/65R17	104	H	600 A A	\$132.98	
	Sorento	2015-2020	N'PRIZ RH7	13423		235/60R18	103	H	440 A A	\$132.98	
	Sorento HEV	2021	Roadian GTX	16581		235/65R17	104	H	600 A A	\$132.98	
	Soul	2010-2013	CP662	11073	P	195/65R15	89	S	440 A A	\$79.98	
		2011-2013	CP662	11074	P	205/55R16	89	H	440 A A	\$99.98	
		2014-2018	CP671	13333		205/60R16	92	H	400 A A	\$106.98	
			CP671 H	13320		215/55R17	94	V	400 A A	\$111.98	
		2019-2021	N'PRIZ AH8	15605		205/60R16	92	H	500 A A	\$101.98	
				15606		215/55R17	94	V	500 A A	\$112.98	
		2014-2018	CP671 H	13321		235/45R18	94	V	400 A A	\$137.98	
	Soul EV	2015-2020	N'BLUE EV	15705		205/60R16	92	H	400 A A	\$108.98	
		2019-2021	N'PRIZ AH8	15606		215/55R17	94	V	500 A A	\$112.98	
	Sportage	2011-2013	CP671	11462		215/70R16	100	H	460 A A	\$126.98	
2017-2018		N'PRIZ RH7	14179		225/55R18	98	H	540 A A	\$150.98		
	Outlander Sport	2014-2021	N'PRIZ RH7	12817	P	225/55R18	97	H	440 A A	\$143.98	
	Outlander	2022	Roadian GTX	16640	P	255/45R20	101	W	600 A A	\$175.98	
	GLE/GLS/ GLC	2019-2021	402	*16014	T	155/80R19	114	M	-	\$210.00	
	1500	2018-2021	ROADIAN HTX RH5	15278		275/55R20	113	T	640 A A	\$178.98	
	3500	2014-2021	ROADIAN HTX RH5	13353	LT	235/80R17	120/117	R		\$181.98	
		2014-2021	ROADIAN AT PRO RA8	13354	LT	235/80R17	120/117	R		\$191.98	
		2017-2021		14760	LT	275/70R18	125/122	R		\$220.98	1.32
	ProMaster	2015-2021	ROADIAN CT8 HL	13427	LT	225/75R16	115/112	R		\$134.98	
		2017-2021	ROADIAN CT8 HL	15386		225/75R16C	121/120	R		\$140.98	
	ProMaster City	2017-2021	N'PRIZ AH8	14369		215/55R16	97	H	440 A A	\$104.98	
	Jetta	2018-2021	N'PRIZ AH8	15530		205/55R17	91	H	500 A A	\$122.98	
	Passat	2020-2021	N'FERA AU7	16313		215/55R17	94	H	560 A A	\$115.98	
	Macan	2017-2018	N'FERA RU1	14969		235/55R19	101	Y	320 AA A	\$184.98	
		2019-2021		15697		235/55R19	101	Y	320 AA A	\$184.98	
		2017-2018		14942		255/50R19	103	Y	320 AA A	\$186.98	
		2019-2021		15698		255/50R19	103	Y	320 AA A	\$186.98	

Technical data can be changed without further notice.
* Spare Tire

Original Equipment 2021 Patterns



N FERA SUR4g



N FERA AUT



N FERA RUI



N Pri2 AH8



N Pri2 RH7



LT275/70R18



LT235/80R17

ROADIAN AT PRO RAB



275/55R20



LT235/80R17

ROADIAN HTX RH5



ROADIAN CT8 HL



CP662



CP671



N blue EV

NEXEN TOTAL COVERAGE WARRANTY

1. ABOUT NEXEN TOTAL COVERAGE WARRANTY

This limited warranty only applies to the original purchaser of new replacement tires sold by NEXEN TIRE USA (as below NEXEN TIRE), and tires must have been used on the same vehicle that they were originally installed on.

This warranty applies to tires purchased after March 1, 2021. Tires purchased before March 1, 2021, are subject to the previous published warranty.

The Nexen Total Coverage Warranty offers the consumer the following benefits:

- Coverage for Defects in Workmanship and Materials
- Mileage Tread Wear Limited Warranty*
- Road Hazard Replacement Program*
- Roadside Assistance – Flat Tire Change or Tow Service
- 45-day Satisfaction Guarantee Trial Warranty

*Most, but not all, NEXEN TIRE patterns come with a Mileage Tread Wear Warranty and/or Road Hazard Replacement. Check each pattern for coverage.

For purposes of this warranty, the term “usable tread life” will be determined as having at least 2/32” (1.6mm) of tread remaining evenly across the tire. If less than 2/32” (1.6mm) of tread remains at any point on the face of the tire, the tire will be considered past its usable tread life and subject to any and all conditions stated below.

2. WORKMANSHIP AND MATERIALS

All NEXEN tires are warranted against defects in workmanship and material and will be replaced 100% free of charge for the initial warranty period, which is the first 2/32” (1.6mm) of original usable tread life, or within 12 months from the period of purchase, whichever comes first.

After the 100% replacement term expires and the tire is still within 72 months from date of manufacture, the amount of credit will be determined by the percentage of original tread depth remaining on the tire. Under all circumstances, the cost of mounting, balancing and any other service charges, including applicable taxes, are required to be paid by the consumer.

3. MILEAGE TREAD WEAR LIMITED WARRANTY

Designated patterns manufactured by NEXEN TIRE are assigned a mileage warranty that protects the consumer against premature tread wear. If a tire reaches the end of its “usable tread life” before the stated mileage warranty, the consumer will be issued a replacement NEXEN tire on a pro-rated basis, which means the consumer will be responsible for a percentage of the replacement cost. In order to maintain the tread wear warranty, all tires must be rotated at least every 5,000 – 6,000 miles (8,000 – 10,000 km). Under all circumstances, the cost of mounting, balancing and any other service charges, including applicable taxes, are required to be paid by the consumer.

4. WHAT IS NOT COVERED UNDER THIS LIMITED WARRANTY

This warranty does not cover tires damaged due to misuse, abuse or accident such as:

- Ride complaints after the first 2/32” of tread wear or

replacement of three (3) or more tires from the same vehicle will not be accepted.

- Road hazard damage such as cuts, snags, punctures or tire repair, bruises, impact breaks, etc. (Check Road Hazard Replacement Program for patterns that are covered against this type of damage.)
- Premature or irregular wear (a measured tread difference of 2/32” (1.6mm) or more across the tread on the same tire) due to vehicle mechanical deficiencies or failure to rotate the tires at recommended intervals.
- Tires on any vehicle registered and normally operated outside the United States.
- Damage from incorrect mounting or dismounting of the tire, incorrect application, water or other material trapped inside the tire during mounting or failure to balance the tires.
- Damage from over/under inflation, overload or defective vehicle mechanical conditions.
- Tires with a lower load index and/or speed rating than that of the OE tire.
- Racing, off-road use and misapplication of tire to vehicle.
- Ozone or weather cracking on tires after 48 months from the date of manufacture.
- Minor cosmetic ozone or weather cracking.
- Any tires worn beyond the wear indicators. (Less than 2/32” remaining tread depth.)
- Flat spotting caused by improper storage or brake lock.
- Accident, fire, chemical corrosion, tire alteration, willful abuse or vandalism.
- Tires in which D.O.T. identification number and/or barcode on bead and/or brand name removed intentionally.
- Loss of time or use, inconvenience or any incidental or consequential damage.
- Original equipment tires on new vehicle. (See separate warranty, if applicable, in your vehicle’s glove box.)
- Tires purchased as used.
- Tires that have been recapped, retreaded or regrooved.
- Use of tire chains.
- Tires used on recreational vehicles (for camping and motor homes, etc.) or in commercial service (i.e., tires used for taxi service, delivery, ride-sharing vehicles, etc.).
- Tires stored improperly.

5. OTHER LIMITATIONS INCLUDE, BUT ARE NOT LIMITED, TO THE FOLLOWING:

- Failure to rotate tires as recommended voids the tread wear warranty.
- If tires are different sizes on front and rear of vehicle and therefore can’t be rotated, the mileage warranty for the rear tires will be half of the stated mileage warranty.
- Winter tires must be used only in winter months, which are determined to be September 1st through April 30th of the following year. Documentation is required showing date of installation and removal to maintain tread wear warranty.

6. ROAD HAZARD REPLACEMENT PROGRAM

Most patterns sold by NEXEN TIRE are covered by a road hazard warranty that protects the consumer against non-repairable damage caused by puncture, snag, cut, bruise or impact break. Typical road hazards are nails, glass, potholes and other debris. Covered tires will be eligible for a free replacement for the first

NEXEN TOTAL COVERAGE WARRANTY

3/32” of original tread depth, or for a period of two years from the date of purchase, whichever comes first. If the DOT # on the tire is greater than one year from the adjustment date, an invoice showing date of purchase is necessary. The cost of mounting, balancing and any other service charges, including applicable taxes, are required to be paid by the consumer.

7. WHAT IS NOT COVERED UNDER ROAD HAZARD REPLACEMENT PROGRAM

- A tire that is damaged due to vandalism.
- A tire that is damaged due to an accident.
- A tire that is repairable under U.S. Tire Manufacturers Association (USTMA) standards.
- A tire that has failed due to commercial use.
- A tire that is damaged or failed due to racing or off-road use.
- A tire that is damaged due to use of snow chains or studs.
- A tire that is damaged or failed due to irregular wear caused by mechanical issues.
- Original equipment tires on new vehicle.
- Tires transferred from the vehicle that they were originally installed on.

8. 45-DAY SATISFACTION GUARANTEE TRIAL WARRANTY

NEXEN TIRE’s 45-day Satisfaction Guarantee Trial Warranty covers a complete set of four (4) N’FERA SU1, N’FERA AU7, N5000 Platinum, N5000 PLUS, N’PRIZ AH8, Aria AH7, Roadian GTX, Roadian HTX RH5, Roadian AT Pro RA8, Roadian MTX and Roadian CT8 HL tires. If you’re not completely satisfied for any reason, other than the conditions that are listed in the “WHAT IS NOT COVERED” section with your eligible tires, simply return them with the proof of purchase to the dealer where they were purchased within 45 days or 500 miles, whichever comes first, for a new set of Nexen brand replacement only.

Limitations and Requirements

- This trial warranty only applies to the original purchaser and is non-transferable.
- Any return of less than a full set of tires will not be accepted.
- Proof of purchase must be provided for both the original set and replacement set.
- Tires must be returned undamaged. Tires exhibiting misuse, road hazard, mounting damage, vehicle mechanical-related problems, repairs, improper inflation, vandalism, run flat and/or any racing activity wear are excluded from this trial warranty.
- Original purchaser pays the amount due on a new replacement tire, less the amount of credit, including applicable taxes, mounting and balancing charges and/or the cost of other services ordered.
- Replacement tire must be installed on original purchase vehicle.
- Replacement must be done at original place of purchase.
- Only original purchase is covered by 45-day Satisfaction Guarantee Trial Warranty.
- Replacement set is not covered by 45-day Satisfaction Guarantee Trial Warranty.
- Tires measuring more than 1/32” of tread wear from original tread depth are excluded from trial warranty.

9. CONSUMER’S OBLIGATION WHEN FILING CLAIM

To maintain Mileage Tread Wear Warranty and Road Hazard Replacement Program, the consumer is responsible for the following:

- Any claims must be presented to a participating authorized NEXEN TIRE dealer.
- Submit or present a copy of the original purchase receipt with documented automobile mileage at time of tire installation and of tire dismounting.
- Submit a tire rotation record showing that all tires have been rotated at least every 5,000 – 6,000 miles (8,000 – 10,000 km). Tire rotation record is not necessary for Road Hazard claims when tire is within 2/32” difference of remaining tread depth as measured from shoulder to shoulder on the claim tire and compared to the remaining tread depth of the opposite front/rear or left/right tire.
- NEXEN TIRE Claim Adjustment forms are provided by the dealer. Keep a copy for your records and leave the tire with the dealer for warranty processing.

Warranty Information by Pattern (for Replacement Tires Only)

Tire Pattern	Tread Wear Mileage Warranty	Road Hazard Replacement Warranty (First 3/32” or 2 Years)	45-day Trial	36-Month Roadside Assistance Program
N’FERA SUR4G	N/A	N/A	N/A	YES
N’FERA SU1	25,000	YES	YES	YES
N’FERA AU7	50,000	YES	YES	YES
N5000 Platinum	55,000 (W)	YES	YES	YES
	70,000 (H,V)			
N5000 PLUS	65,000	YES	YES	YES
N’PRIZ AH8	70,000	YES	YES	YES
Aria AH7	80,000	YES	YES	YES
N’PRIZ AH5	50,000	YES	N/A	YES
SB-802	N/A	N/A	N/A	YES
Roadian HP	40,000	YES	N/A	YES
Roadian GTX	70,000	YES	YES	YES
Roadian HTX RH5	65,000 (P)	YES	YES	YES
	40,000 (LT)			
Roadian AT Pro RA8	50,000 (P)	YES	YES	YES
	40,000 (LT)			
Roadian MTX	N/A	N/A	YES	YES
Roadian MT	N/A	N/A	N/A	YES
Roadian CT8 HL	N/A	N/A	YES	YES
Roadian CT8	N/A	N/A	N/A	YES
Winguard Sport 2	N/A	N/A	N/A	YES
Winguard Ice Plus	N/A	N/A	N/A	YES
Winguard Ice SUV	N/A	N/A	N/A	YES
Winguard Winspike WH62	N/A	N/A	N/A	YES
Winguard Winspike WS62	N/A	N/A	N/A	YES
Winguard Winspike	N/A	N/A	N/A	YES
Eurowin	N/A	N/A	N/A	YES

NEXEN TOTAL COVERAGE WARRANTY

10. TIRES PURCHASED FROM UNAUTHORIZED DEALERS

IT IS IMPORTANT TO PURCHASE OUR TIRES FROM AUTHORIZED DEALERS ONLY.

Tires imported by NEXEN TIRE AMERICA INC. are suitable for the U.S. conditions whereas tires not imported by NEXEN TIRE AMERICA INC. may meet an alternative specification that is less suitable for the U.S. conditions. In addition, unauthorized importers or dealers may provide tires that are several months or years older by the time they arrived in the U.S. or they may have been stored in improper or unfavorable conditions. Taking them into consideration, in order to provide the best quality of our tires and services, we need to ensure that tires are purchased from an authorized dealer and imported by NEXEN TIRE AMERICA INC. Tires purchased from an unauthorized dealer or not imported by NEXEN TIRE AMERICA INC. ARE NOT COVERED by this warranty. If a tire purchased from an unauthorized dealer or not imported by NEXEN TIRE AMERICA INC. fails or is defective, all claims relating to that tire should be directed to the dealer or importer and not to NEXEN TIRE AMERICA INC.

Please note that sellers on Amazon.com, eBay.com, Craigslist or similar online markets are not authorized dealers of NEXEN branded tires. When purchasing on these online markets, it is fully your responsibility as a customer to ensure that sellers are authorized by NEXEN TIRE AMERICA INC. The following businesses have been identified as unauthorized by NEXEN TIRE AMERICA INC. to sell NEXEN branded tires in the U.S. The list is subject to change/update.

- TGI (TIRE GROUP INTERNATIONAL)
- TIREMAX INTERNATIONAL
- PARTSMAX

If you are concerned about whether sellers are authorized by us, please contact us at 1-800-57-NEXEN(63936) and we can verify whether the seller is authorized or tires are imported by NEXEN TIRE AMERICA INC.

11. ROADSIDE ASSISTANCE

All patterns sold after January 1, 2021, by NEXEN TIRE in the United States and Canada are eligible for free 24/7/365 Roadside Assistance for a period of 36 months from the purchase date. Upon purchasing NEXEN tires, the consumer will have access to a toll-free phone number to call in case of a flat tire. A qualified professional will change your flat tire with your spare tire free of charge. If a working spare is not available, towing will be provided free of charge to the nearest NEXEN TIRE dealer or safe and secure location. Activation is required before Roadside Assistance service can be utilized.

*NEXEN TIRE reserves the right to change the terms and conditions of all warranties at any time.

12. TIRE CARE AND MAINTENANCE GUIDE

Tire failure can result in serious damage and/or personal injury. To reduce the risk of tire failure, we recommend the following.

- Maintain proper inflation pressure and do not use at under-inflation or over-inflation. Pressure should be set at the level recommended by vehicle manufacturer.

- Wheel alignment and balancing should be checked at regular intervals.
- Do not overload. The maximum load carrying capacity is molded on the sidewall of the tire.
- Do not spin your tires excessively and avoid driving over curbs, potholes, obstacles and edges of pavement.
- Never drive on smooth (bald) tires. By law, tires must be replaced when 2/32” of tread depth remains, as indicated by tread wear indicator molded in the tread grooves.
- Check your tires frequently for any scrapes, cuts, foreign objects, separations or bulges. If damage is found, do not attempt to dismount the tire yourself. Change damaged tire with the spare and contact your local authorized NEXEN TIRE dealer immediately.
- Do not drive in excess of speed limits allowed by law or the maximum speed justified by driving conditions.
- To achieve proper even wear and gain maximum tread life, tire rotation at regular intervals is required.

Please be advised that the extreme ultra high performance tire, N’Fera SUR4G, although approved for street use, is targeted for track and competition driving.

- Driving on wet roads, heavy rain, or standing water with competition-oriented tires may cause hydroplaning and loss of control. Use extreme caution and drive slowly on wet roads.
- Competition-oriented tires should not be driven on snow or ice-covered roads. At temperatures below 40°F, tires may experience reduced traction. It is recommended that suitable all season or winter tires be installed at temperatures below 40°F.
- When exposed to temperatures below 14°F, tires may exhibit surface cracking. Never use tires that have cracked. Surface cracking due to cold temperatures is not a warrantable condition.
- Always store competition-oriented tires indoors at temperatures above 14°F. If tires have been subjected to temperatures below 14°F, they must be warmed to at least 50°F for 24 hours before using or installing. If using unheated storage, tires should be removed from the vehicle and deflated to half the normal air pressure. Before use, tires must be inspected for signs of cracking and returned to normal air pressure.

For more information or service regarding NEXEN TIRE, please contact your nearest authorized NEXEN TIRE dealer.

For more information, please call the toll-free technical support number: 1-800-57-NEXEN (63936) / 1-866-70-NEXEN (63936)

NEXEN warranty portal warranty assistance link: service.nexentireonline.com (Please use this link for any customer warranty assistance needed)

MINIMUM ADVERTISED PRICING POLICY [MAP]

Nexen Tire America, Inc. Minimum Advertised Pricing Policy [MAP] [Effective January 1, 2021]

- I. Nexen Tire America brand (“Nexen”) is synonymous with high-quality products and superior customer service and support. We are committed to maintain and protect our brand. These policies have been established to improve and protect the reputation of the Nexen brand, its resale network, and customer relationships, and give all resellers an equal ability to sell and promote the product. Nexen gives its direct dealers and associated dealers (collectively called “authorized resellers”) and third-party resellers the ability to sell and promote Nexen branded products in ordinary channels of trade, but Nexen requires that all U.S. resellers of Nexen products, whether they be direct dealers, associated dealers or third-party resellers adhere to this Minimum Advertised Pricing (MAP) policy. This policy is being implemented unilaterally by Nexen, and Nexen will not invite or accept any input into its terms, how it will be administered, or how it will be maintained. Further, this is not an agreement between Nexen and any other party, and Nexen will not ask for or accept any agreement from another party.
- II. This MAP policy applies to only those Nexen branded products sold by Nexen listed in the Appendix to this MAP Policy (the “Products”), and only to the “advertising” practices of the resellers.
- III. Any reseller of Nexen products may not advertise any price below that of the officially published MAP for that particular product,. Further detail on prohibited advertising is set forth in Section VI below.
- IV. The Company shall not mandate the actual selling price of any Product by a reseller, and shall not issue any directive or limitation regarding maximum advertised prices. Each reseller remains free to set, independently, the actual resale price and no employee or agent of Nexen shall be authorized to require anything to the contrary.
- V. This MAP policy applies to all advertisements of Nexen products in any and all media, whether in print, online, or in an email. Without limiting the generality of the foregoing, the MAP policy includes:
 - a. flyers, posters, coupons, mailers, inserts, newspapers, publications, magazines, circulars, catalogs, mail order catalogs, public signage, and other print media, including advertisements and marketing by affiliates;
 - b. broadcasts on networks, television, and radio, including advertisements and marketing by affiliates;

- c. Online and any other electronic or social media marketing, including websites that can be accessed directly through any hypertext link or by any other method which uses the hypertext transfer protocol (http); search engine advertising, broadcast e-mail newsletters, e-mail solicitations, automated response pricing e-mails, SMS or other phone/electronic text messages, search engine optimization, banners, pop-ups or pop-up under ads, price comparison sites, auction functions or websites, shopping websites, shopping feed and portal sites, online display advertising, or similar electronic media, including advertisements and marketing by affiliates.
 - d. Email and customer service interactions in response to a customer inquiry are not considered advertising.
 - e. This MAP policy does not apply to in-store shelf talkers and point of purchase displays such as signage, price tags or prices written in a sample book, as long as such displays are not distributed or displayed to any customers in any digital media cross-promotions (e.g. Facebook, Instagram, or Pinterest).
- VI. If the advertising method provides for or suggests a price below the minimum advertised price, such advertising violates this MAP policy. Examples of advertising methods that violate this MAP policy include, but are not limited to, the following:
- a. The use of a rebate, coupon, promotion, giveaway, or incentive that reduces the advertised price below the minimum advertised price.
 - b. The inclusion in advertising of fee or discounted products with a Product covered by this MAP policy if it has the effect of discounting the advertised price of the covered Product below the minimum advertised price.
 - c. Offering free shipping and handling of Nexen branded products violates this MAP policy if the monetary value for such offer results in the display of the price for such Product below the established minimum advertised price for such Product.
 - d. If pricing is displayed, any strike-through or other alteration of the established minimum advertised price is prohibited.
 - e. The use of “click on” or “click through” button on a website, or any similar buttons or automated price quotation transmission features, to provide automatic price quotations at or below the established minimum advertised price.

- f. Language such as “Click ‘Buy for Price’” or “Click ‘Add to Cart’ for Price” or “Click for Quote” if used on the same website page on which Nexen branded products are being advertised for sale.
 - g. Statements such as “Click here for Lower Price,” “Add to Cart for Lower Price,” or “Check Cart for Lower Price.”
- VII. This MAP policy does not:
- a. Prohibit responses to specific requests for price quotes by an individual customer as long as such responses are not automatic and are given in an individualized personal communication to the requesting customer.
 - b. Apply to the price at which goods are actually sold. Nexen resellers are free to sell the Nexen products at any price.
- VIII. Intentional or repeated failures to comply with this MAP policy for Nexen products can result in sanctions being unilaterally imposed in Nexen’s sole discretion, which may include one or more of the following actions: (1) suspension and/or loss of any future product purchase discounts, rewards earned or to be earned, loyalty bonuses earned or to be earned, brand support bonuses earned or to be earned, and sales incentives; (2) suspension of shipments of products; (3) termination of the reseller’s business relationship with Nexen. Nexen will act in its own unilateral discretion should it observe a failure to comply with this MAP policy. As a standard practice Nexen usually will give – but is not obligated to give – a notice to any reseller violating the policy.
- IX. Nexen reserves the right to modify or suspend this MAP policy or adjust the MAP for any product at any time. Such changes will apply equally to all resellers.
- X. Nexen resellers shall provide a copy of this MAP to all of their third-party resellers, as this MAP applies to such third-party resellers as well.
- XI. All questions regarding this Policy can be directed to the Nexen Tire America Compliance Team at map@nexentireusa.com.

	4			2			1			31		30		29
	28			26			25			24		23		22
	21			19			18			17		16		15
	14			12			11			10		9		8
	7			5			4			3		2		1
SATURDAY	FRIDAY	THURSDAY	WEDNESDAY	TUESDAY	MONDAY	SUNDAY								

NEXEN
N FERa SUR4G

NEXEN
N FERa SUV

NEXEN
N FERa SUV

NEXEN
N FERa SUR4G

2021 AUGUST

NEXEN TIRE

JULY 2021

SUNDAY	MONDAY	TUESDAY	WEDNESDAY	THURSDAY	FRIDAY	SATURDAY
27	28	29	30	1	2	3
4	5	6	7	8	9	10
INDEPENDENCE DAY						
11	12	13	14	15	16	17
18	19	20	21	22	23	24
25	26	27	28	29	30	31

24	25	31
17	18	
23	22	29
30	28	27

10	11	COLUMBUS DAY US INDIGENOUS PEOPLE'S DAY
16	15	14
9	8	7

26	27	28	29	30	1	2

SUNDAY	MONDAY	TUESDAY	WEDNESDAY	THURSDAY	FRIDAY	SATURDAY
--------	--------	---------	-----------	----------	--------	----------

NEXEN TIRE

OCTOBER

ROADIAN MTX
ROADIAN AT PRO R48
ROADIAN CT8 HL

NEXEN TIRE

SEPTEMBER 2021

ROADIAN MTX
ROADIAN AT PRO R48
ROADIAN CT8 HL

SUNDAY	MONDAY	TUESDAY	WEDNESDAY	THURSDAY	FRIDAY	SATURDAY
29	30	31	1	2	3	4
5	6	7	8	9	10	11
12	LABOR DAY	14	15	16	17	18
19	20	21	22	23	24	25
26	27	28	29	30	1	2

 NEXEN TIRE

DECEMBER

1202

WINGUARD *ice Plus*

WINGUARD *ice SUV*

WINGUARD *Sport 2*

 NEXEN TIRE

NOVEMBER 2021

ROADIAN AT *PRO R48*

ROADIAN CT8 HL

ROADIAN MTX

SUNDAY	MONDAY	TUESDAY	WEDNESDAY	THURSDAY	FRIDAY	SATURDAY
31	1	2	3	4	5	6
7	8	9	10	11	12	13
				VETERANS DAY		
14	15	16	17	18	19	20
21	22	23	24	25	26	27
				THANKSGIVING DAY		
28	29	30	1	2	3	4



WE GOT YOU

NEXEN NEXEN TIRE

NEXEN Tire USA Corporate Headquarters

21073 Pathfinder Rd., Suite 100

Diamond Bar, CA 91765

T (800) 57-NEXEN (63936)

F (909) 923-3991

NexenTireUSA.com

