

61

SIZES AVAILABLE

17"-21"

RIM SIZE

Y, (Y)

SPEED RATING

9

NORTH AMERICA OE FITMENTS



N'FERA Sport

Code	Size	LI	SR	XL	Sidewall	OE
10331NXE	215/45R17	91	Y	XL	Black	Mini Cooper (25-26)
17491NXE	215/45R17	91	Y	XL	Black	
16662NXE	225/45R17	94	Y	XL	Black	
17482NXE	215/40R18	89	Y	XL	Black	
16080NXE	215/45R18	93	W	XL	Black	
18908NXE	225/40R18	92	Y	XL	Black	
10345NXE	225/45R18	95	Y	XL	Black	
16659NXE	235/40R18	95	Y	XL	Black	
16664NXE	235/45R18	98	Y	XL	Black	
11760NXE	235/55R18	100	V		Black	Audi Q3 (25-26)
16653NXE	245/35R18	92	Y	XL	Black	
16397NXE	245/40R18	97	Y	XL	Black	
16665NXE	245/45R18	100	Y	XL	Black	
16655NXE	255/35R18	94	Y	XL	Black	
16657NXE	265/35R18	97	Y	XL	Black	
17467NXE	275/35R18	95	Y		Black	
11760NXE	235/55R18	100	V		Black	Audi Q3 (25-26)
17483NXE	225/40R19	93	Y	XL	Black	
15779NXE	225/45R19	96	W	XL	Black	
16652NXE	235/35R19	91	Y	XL	Black	
17490NXE	235/40R19	96	Y	XL	Black	
17488NXE	245/35R19	93	Y	XL	Black	
16660NXE	245/40R19	98	Y	XL	Black	
16666NXE	245/45R19	102	Y	XL	Black	
*91067NXE	245/45R19	102	Y	XL	Black	Audi A6/A7 (25-26)
17580NXE	245/50R19	105	Y	XL	Black	BMW X3/X4 (25-26)
16656NXE	255/35R19	96	Y	XL	Black	
17470NXE	255/40R19	100	Y	XL	Black	
17480NXE	255/45R19	104	Y	XL	Black	
15667NXE	265/35R19	98	Y	XL	Black	
16391NXK	265/45R19	105	Y	XL	Black	Porsche Panamera (21-26)

Code	Size	LI	SR	XL	Sidewall	OE
17484NXE	275/35R19	100	Y	XL	Black	
17469NXE	275/40R19	105	Y	XL	Black	
16392NXK	295/40R19	108	Y	XL	Black	Porsche Panamera (21-26)
*91067NXE	245/45R19	102	Y	XL	Black	Audi A6/A7 (25-26)
15797NXE	235/35R20	92	(Y)	XL	Black	
14717NXE	235/60R20	108	H	XL	Black	BMW iX (25-26)
15803NXE	245/30R20	90	(Y)	XL	Black	
16654NXE	245/35R20	95	Y	XL	Black	
17468NXE	245/40R20	99	Y	XL	Black	
17477NXE	245/45R20	103	Y	XL	Black	
17489NXE	255/35R20	97	Y	XL	Black	
15751NXE	255/40R20	101	Y	XL	Black	
**16084NXE	255/45R20	105	Y	XL	Black	
15844NXE	265/30R20	94	(Y)	XL	Black	
15850NXE	275/30R20	97	Y	XL	Black	
17476NXE	275/35R20	102	Y	XL	Black	
17474NXE	275/40R20	106	Y	XL	Black	
15750NXE	275/45R20	110	Y	XL	Black	
15746NXE	285/30R20	99	(Y)	XL	Black	
15847NXE	285/35R20	104	(Y)	XL	Black	
16076NXE	295/30R20	101	(Y)	XL	Black	
16075NXE	305/30R20	103	(Y)	XL	Black	
15744NXE	315/35R20	110	Y	XL	Black	
15806NXE	245/35R21	96	Y	XL	Black	
16073NXE	255/35R21	98	Y	XL	Black	
14707NXE	255/50R21	109	Y	XL	Black	BMW iX (25-26)
15646NXE	265/35R21	101	Y	XL	Black	
15642NXE	275/35R21	103	(Y)	XL	Black	
**18119NXE	285/45R21	113	Y	XL	Black	Porsche Cayenne (23-26)
**18122NXE	315/40R21	115	Y	XL	Black	Porsche Cayenne (23-26)

N'FERA Sport

PREMIUM ULTRA HIGH PERFORMANCE SUMMER

LUXURY IN MOTION

DESIGNED FOR PORSCHE, AUDI, AND BMW



EV COMPATIBLE



NEXEN TIRE

NEXEN TIRE AMERICA INC. Corporate Headquarters, 4014 Wheatley Road, Richfield, Ohio 44286
T: (800) 576-3936 E: info@nexentireusa.com NexenTireUSA.com | X f @

* Noise Foam ** Tire Pattern is the N'FERA Sport SUV



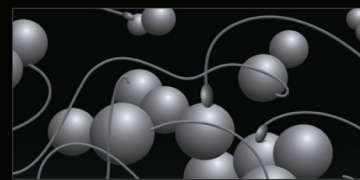
ULTRA HIGH PERFORMANCE FOR BEST SPORT DRIVING

The N'Fera Sport—engineered for drivers who demand the ultimate in ultra-high performance. Designed to elevate your sport driving experience, the N'Fera Sport delivers outstanding wet performance, improved braking capabilities, and enhanced handling, ensuring precision and control in every turn. Whether you're navigating tight corners or pushing the limits on open roads, this tire provides the grip, stability, and responsiveness you need to stay ahead of the competition.

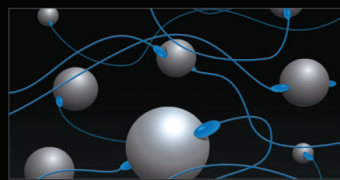
4D COMPOUND TECHNOLOGY

Through the use of an optimized rubber compound, it provides enhanced grip as well as energy efficiency and mileage performance, providing a tire life that is both safe and satisfying.

4D DURABILITY COMPOUND APPLICATION



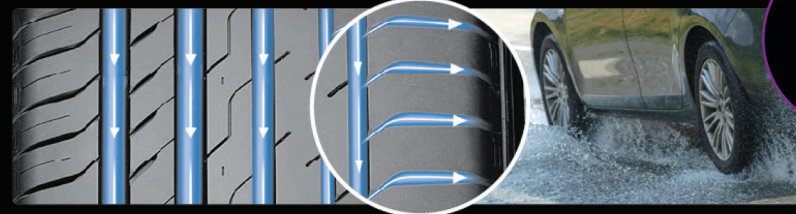
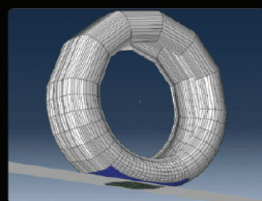
CONVENTIONAL COMPOUND



4D COMPOUND — EVENLY DISTRIBUTED

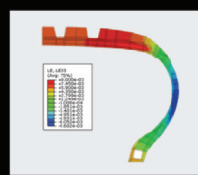
OUTSTANDING WET PERFORMANCE

Improved water drainage performance by optimizing four-channel-groove design using digital simulation technology.



ENHANCED HANDLING PERFORMANCE

Upgraded tire profile using finite analysis technology to reinforce handling, braking performance, and durability.

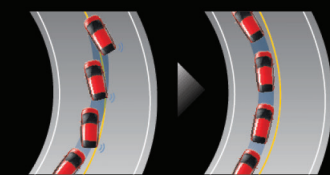


Conventional

Profile Simulations



N'FERA Sport



Conventional N'FERA Sport



DESIGNED FOR ALL VEHICLE TYPES - ICE, HYBRID, PHEV, AND EVs

N'FERA Sport



WIDE LONGITUDINAL GROOVE

Improved drainage performance.



RIGID CENTER BLOCK

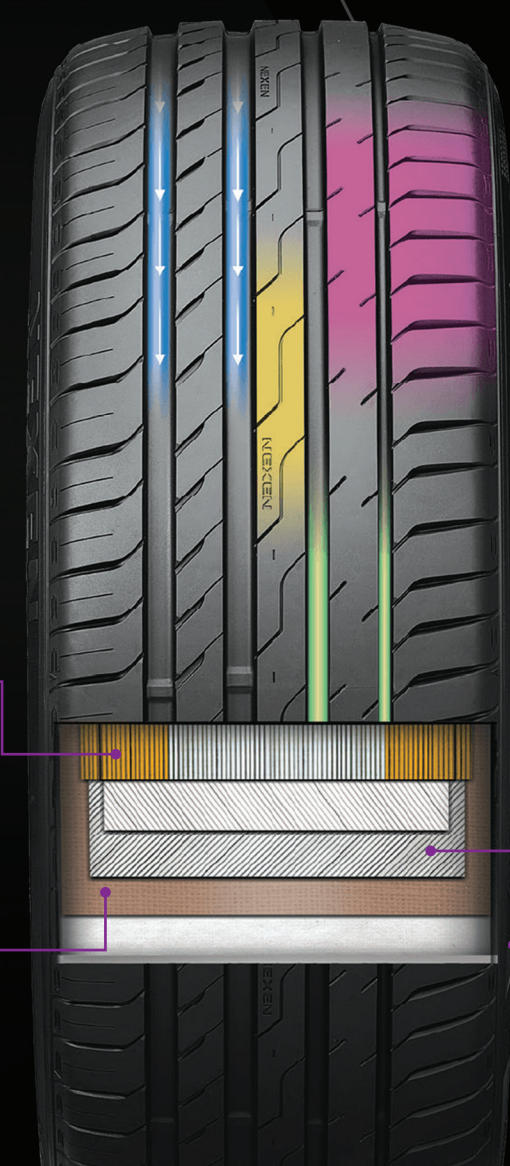
Improved control response & strengthened stability.

JOINTLESS BEAD WIRE & HIGH-HARDNESS BEAD FILLER

Reinforced grip of tire and wheel to improve handling performance.

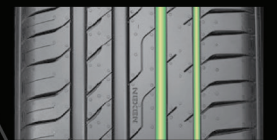
OPTIMUM CARCASS PROFILE

Optimally designed Carcass profile that minimizes tire deflection, improving driving stability.



WIDE OUTSIDE BLOCK DESIGN

Excellent dry & wet handling performance at high speed.



OUTSIDE GROOVE WALL DESIGN

High-speed cornering & grip-handling performance.

HIGH-TENSILE STEEL BELT

Optimizes grip pressure and stress dispersion to enhance braking function with OBCS Technology.

OPTIMUM SIDEWALL

Effectively absorbs impact on various types of surfaces, providing a more comfortable driving experience.



NORTH AMERICAN OE FITMENTS

Porsche Panamera/Cayenne | Mini Cooper
Audi A6/A7/Q3 | BMW iX/X3/X4

RED DOT DESIGN AWARD

The Red Dot is the distinction for high design quality. Only products that demonstrate outstanding design are awarded the coveted seal of quality by an international jury.

